

VOLVO CONSTRUCTION EQUIPMENT MATRIS REPORT

Machine model EC380E	SerialNo 310133	Operating Hours 4752.8	Reading Date 11/30/2017
Company name arnold machinery	Dealer	Report Issuer	
Contact name	Technician 18CETECH	Primary Application Civil engineering/Heavy construction	
Site	Workorder	Ground Condition	

MATRIS Reading, Summary / Recommendation



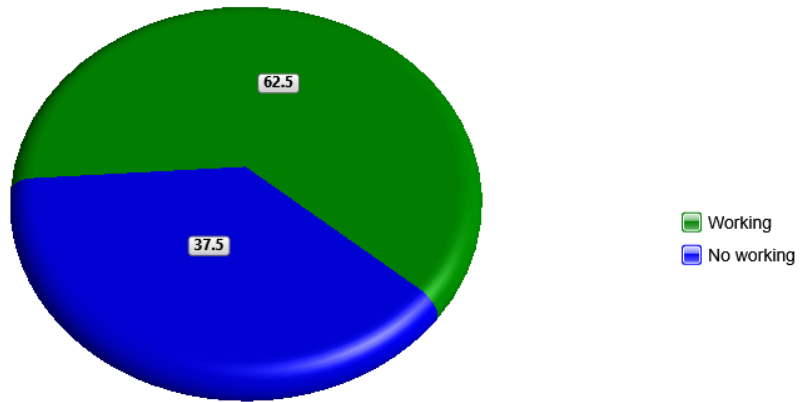
Machine model	SerialNo	Operating Hours	Reading Date
EC380E	310133	4752.8	11/30/2017

Main equipment	Type	Equipment
	Track chain	
	Hydraulic Fluid	
	X1 Piping	
	X3 piping	
	Main Attachment	
	Attachment Interface	
	Hose Rupture Valve on Boom	
	Hose Rupture Valve on Arm	
	X1 return filter	

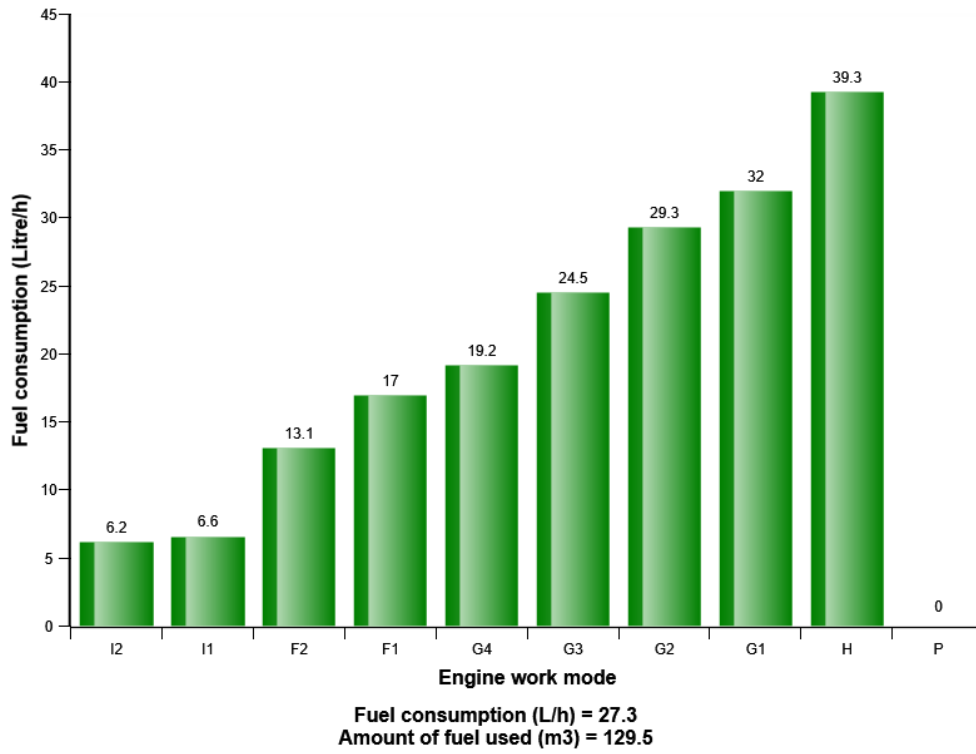


Machine model	SerialNo	Operating Hours	Reading Date
EC380E	310133	4752.8	11/30/2017

Machine utilization (%)

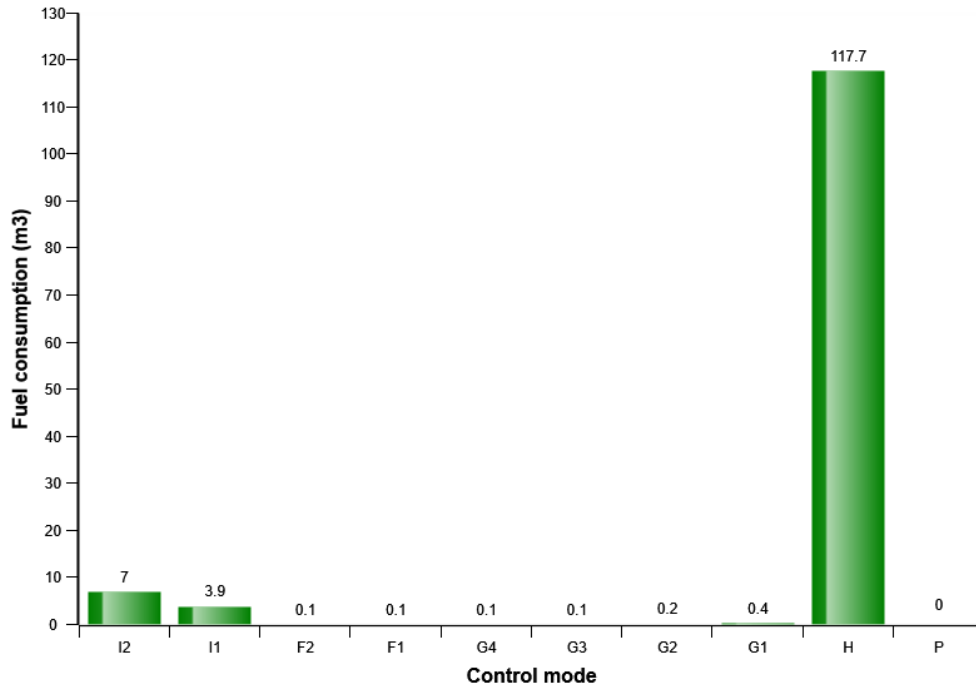


Average fuel consumption per work mode

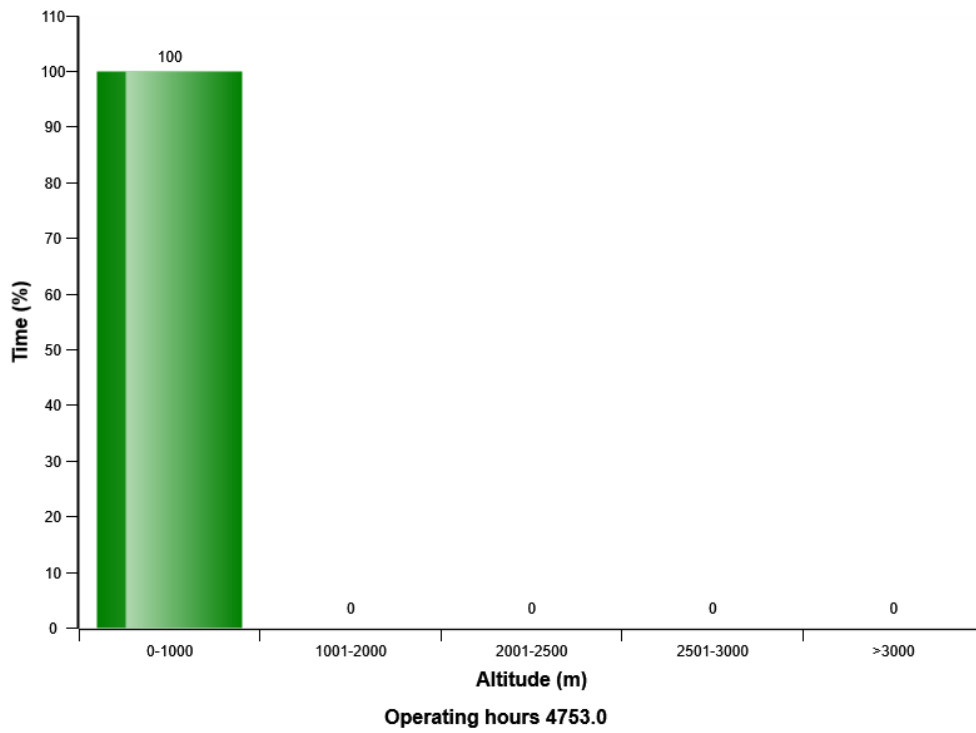


Machine model	SerialNo	Operating Hours	Reading Date
EC380E	310133	4752.8	11/30/2017

Fuel consumption distribution on work mode(m3)

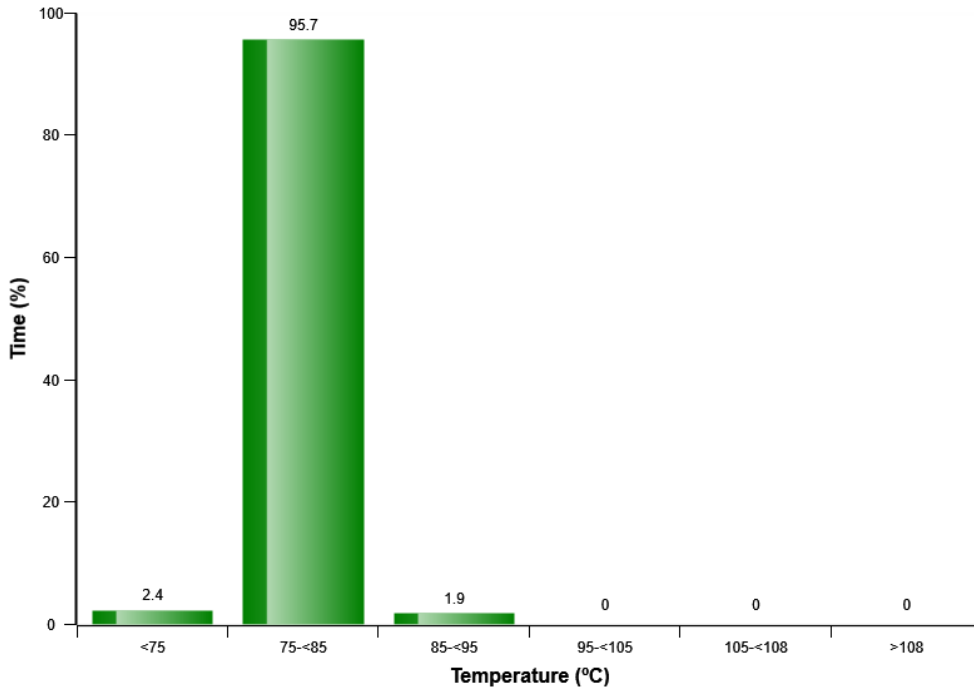


Altitude distribution

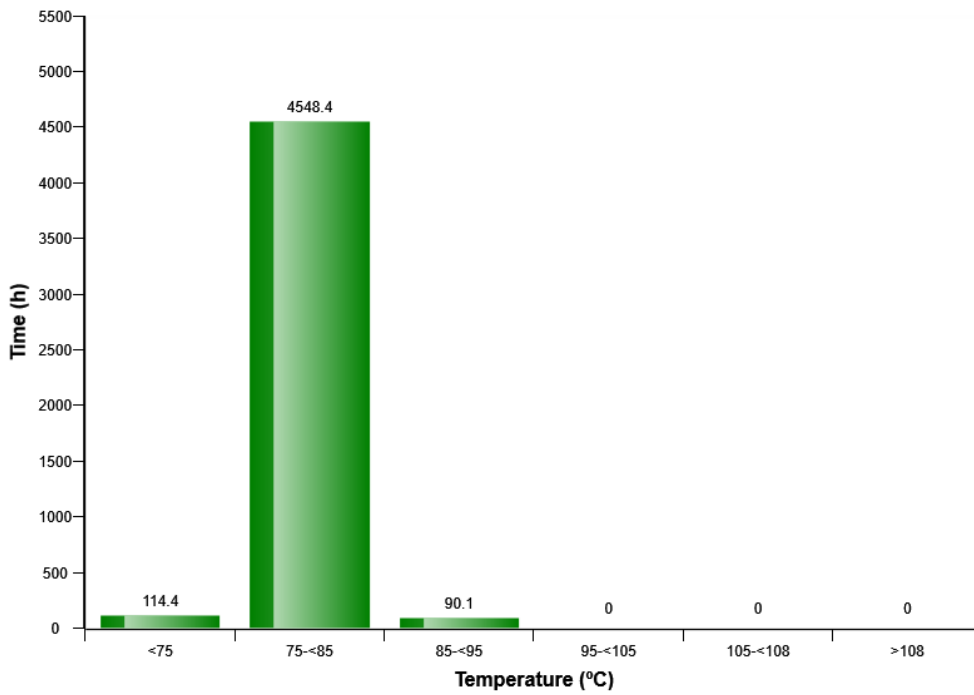


Machine model	SerialNo	Operating Hours	Reading Date
EC380E	310133	4752.8	11/30/2017

Engine coolant temperature, distribution (%)



Engine coolant temperature, distribution (h)

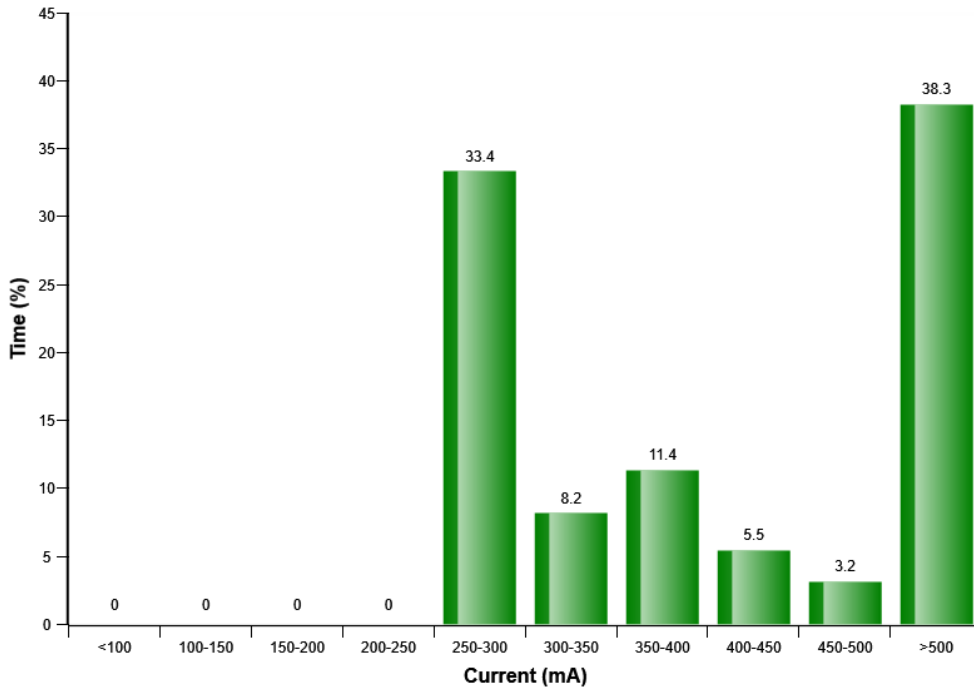


Total coolant temperature hours = 4753.0

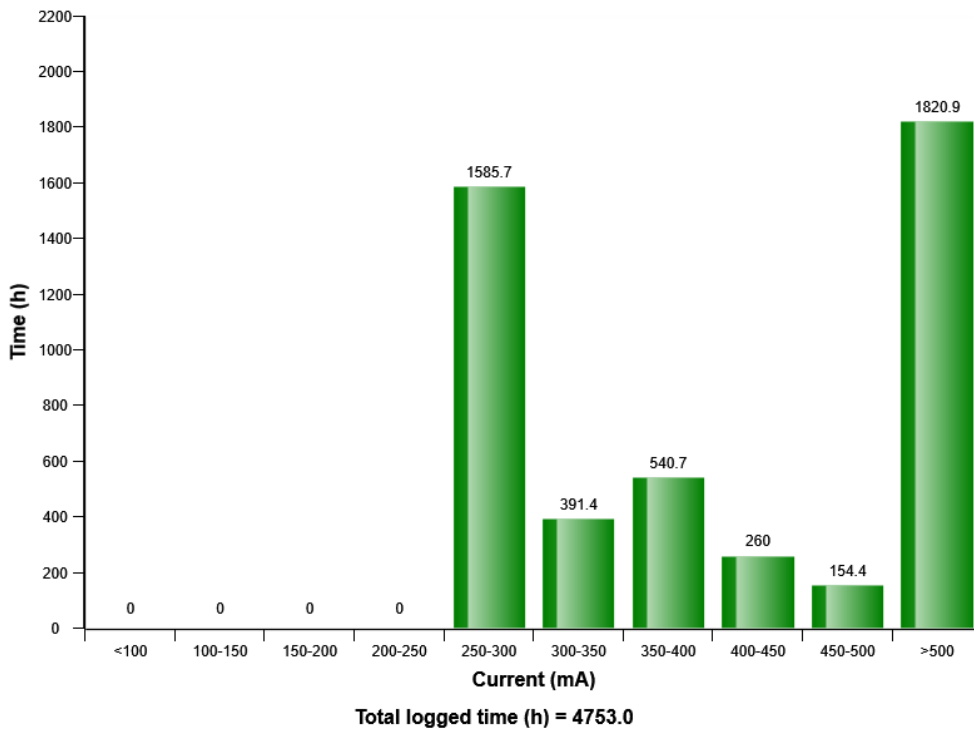


Machine model	SerialNo	Operating Hours	Reading Date
EC380E	310133	4752.8	11/30/2017

Cooling Fan, speed control current distribution(%)

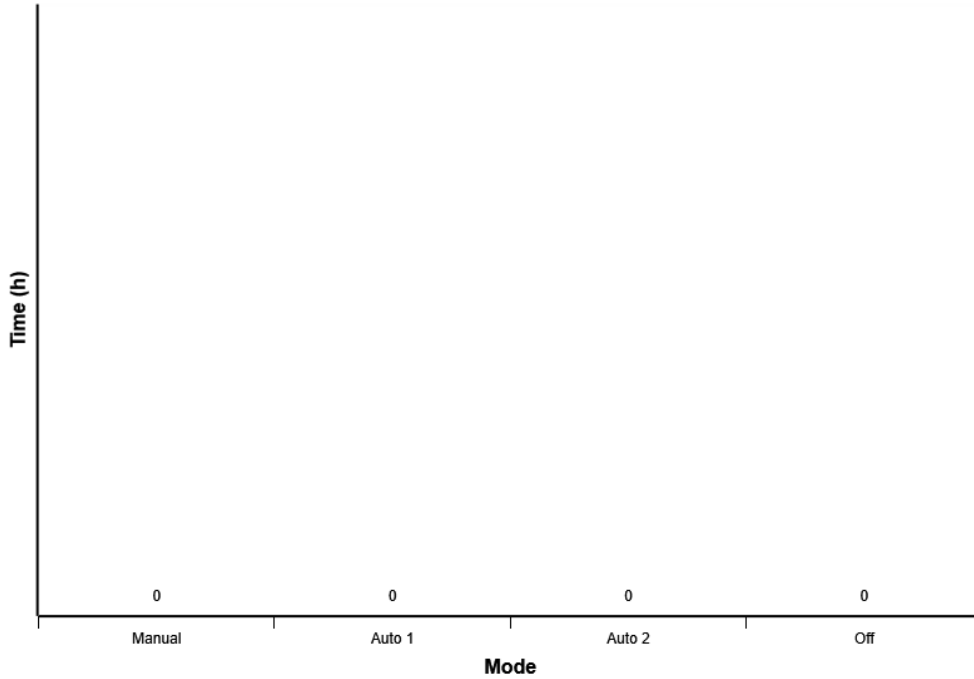


Cooling Fan, speed control current distribution(h)

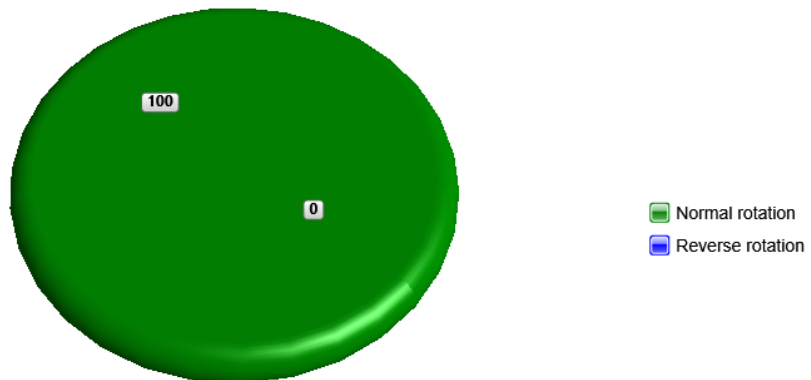


Machine model	SerialNo	Operating Hours	Reading Date
EC380E	310133	4752.8	11/30/2017

Cooling fan, Mode distribution (h)



Cooling fan, Normal-Reverse rotation distribution (%)

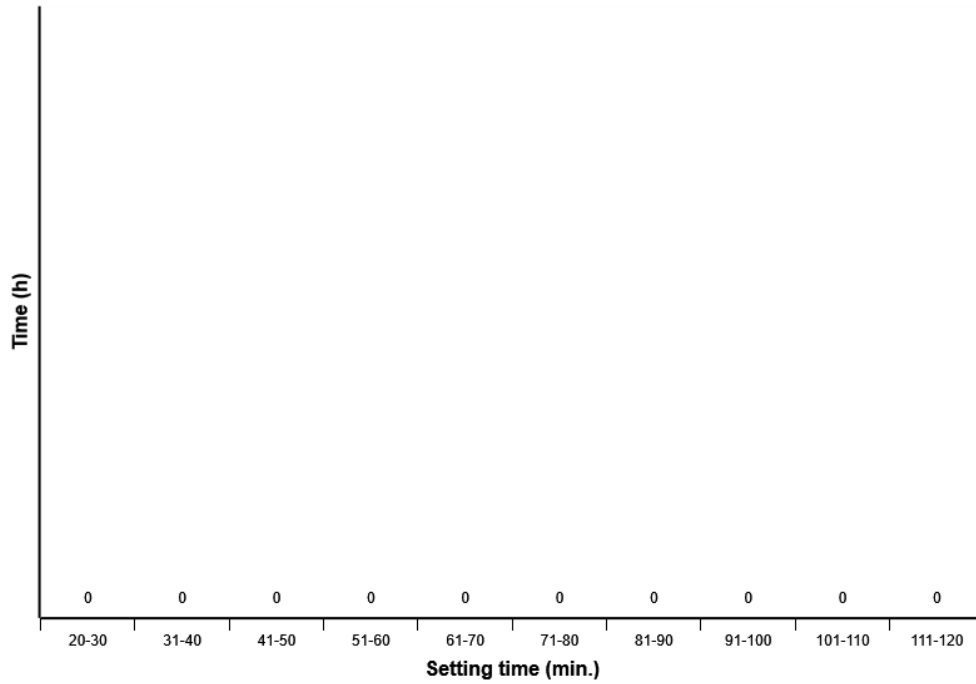


Total operating time (h) = 4753.0

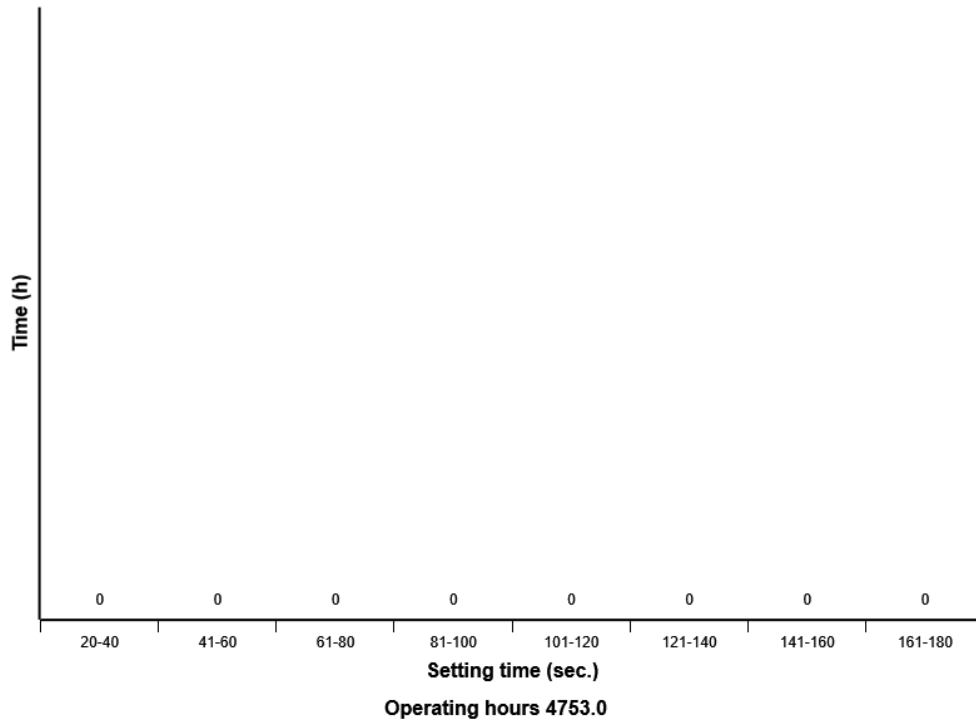


Machine model	SerialNo	Operating Hours	Reading Date
EC380E	310133	4752.8	11/30/2017

Reverisble fan, Time setting distribution (h) at Auto 1 mode

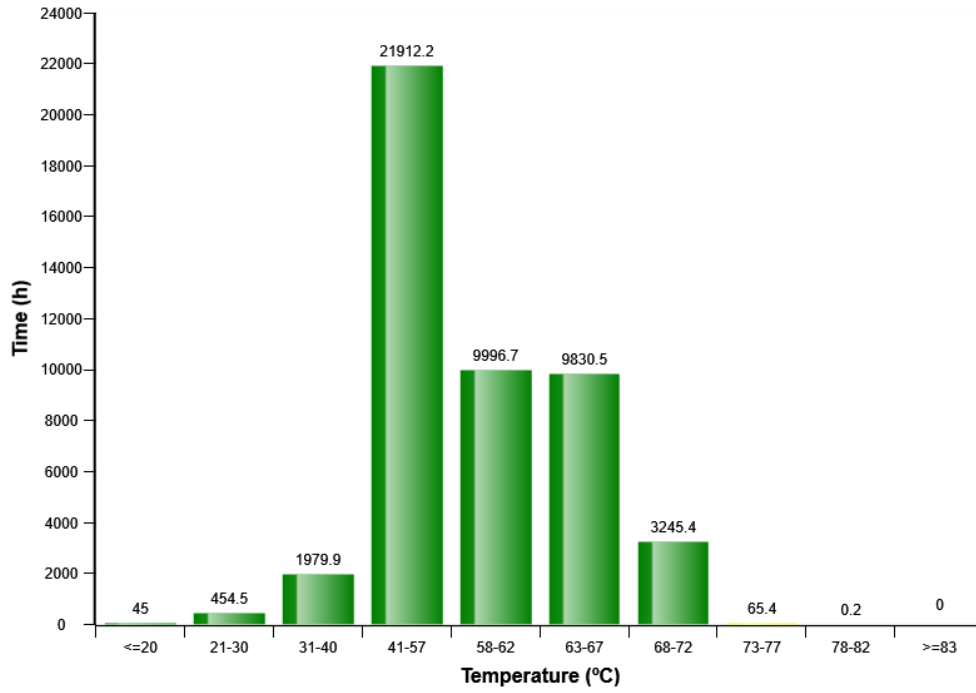


Reversible fan, Time setting distribution (h) at Manual mode

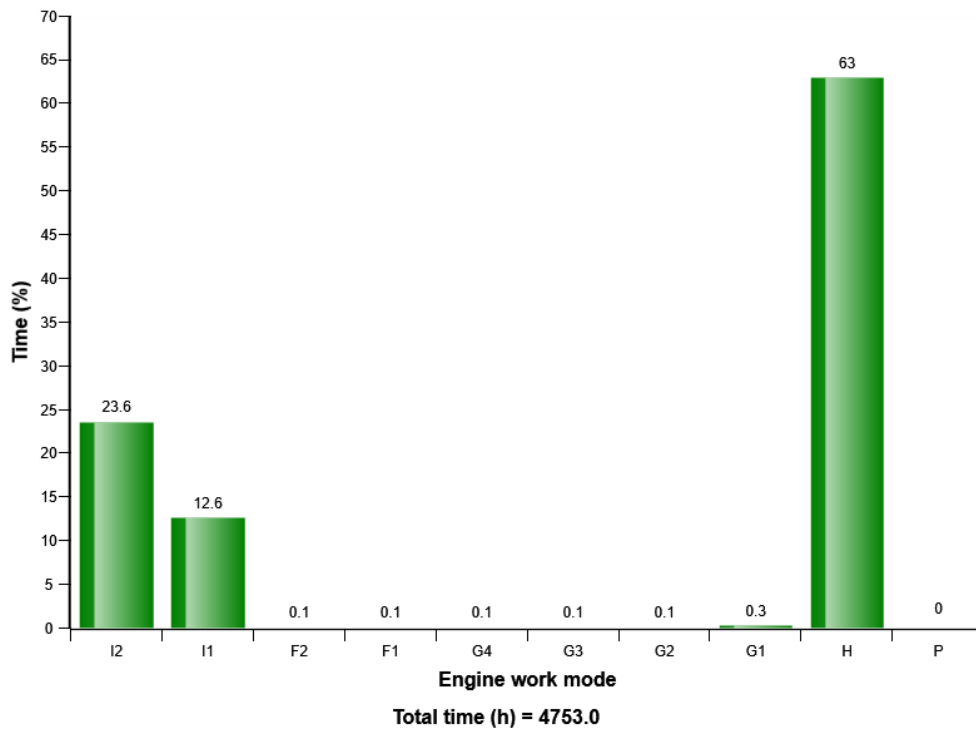


Machine model	SerialNo	Operating Hours	Reading Date
EC380E	310133	4752.8	11/30/2017

Engine boost air temperature distribution (h)

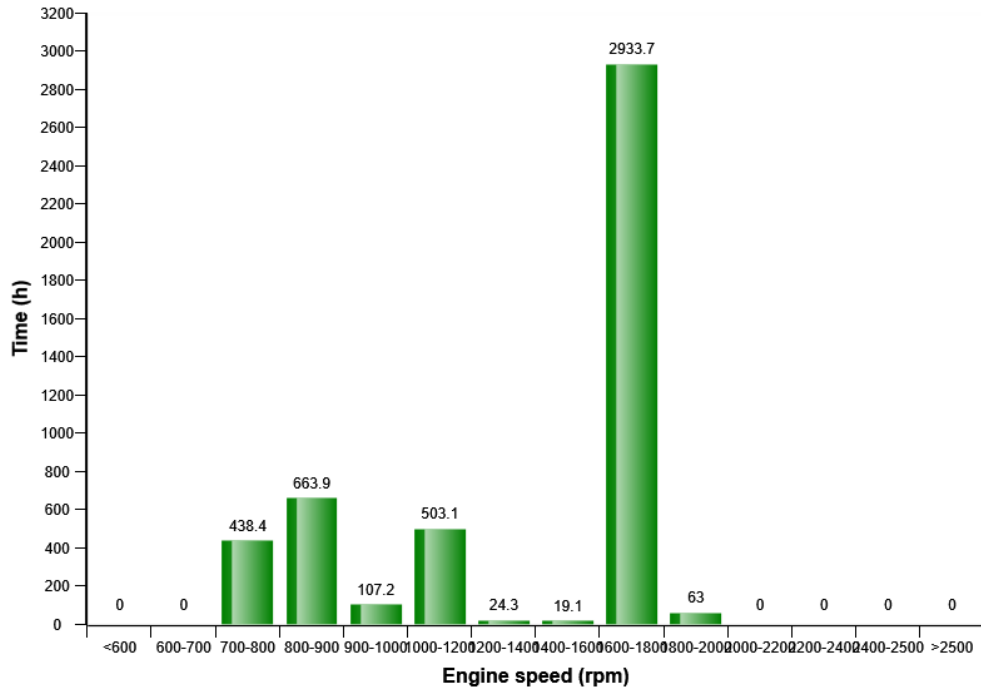


Engine work mode distribution(%)

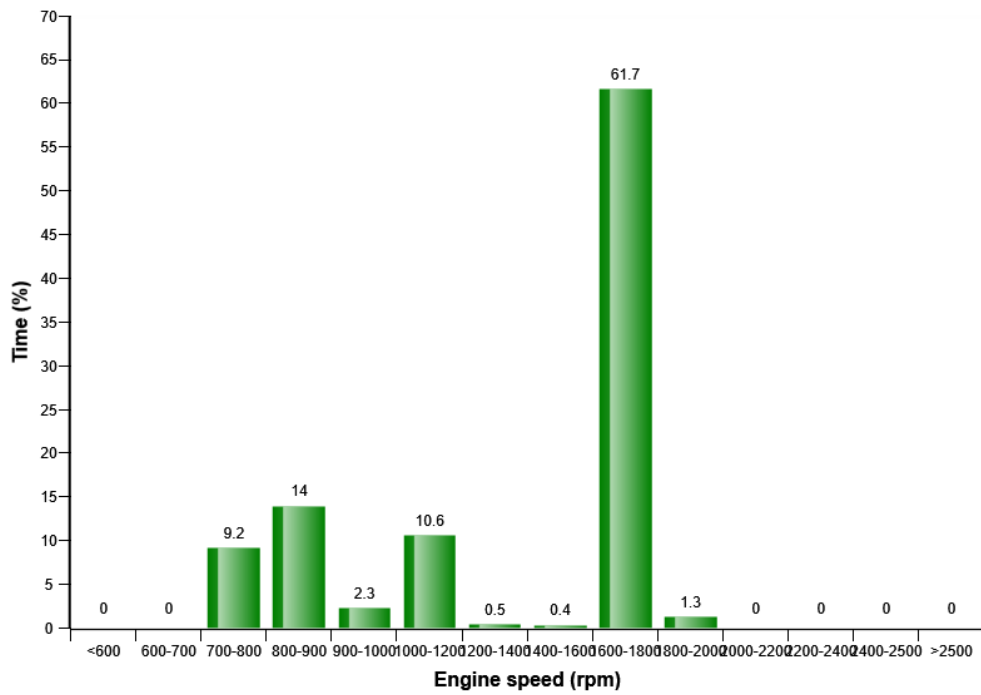


Machine model	SerialNo	Operating Hours	Reading Date
EC380E	310133	4752.8	11/30/2017

Engine speed, distribution (h)



Engine speed, distribution (%)

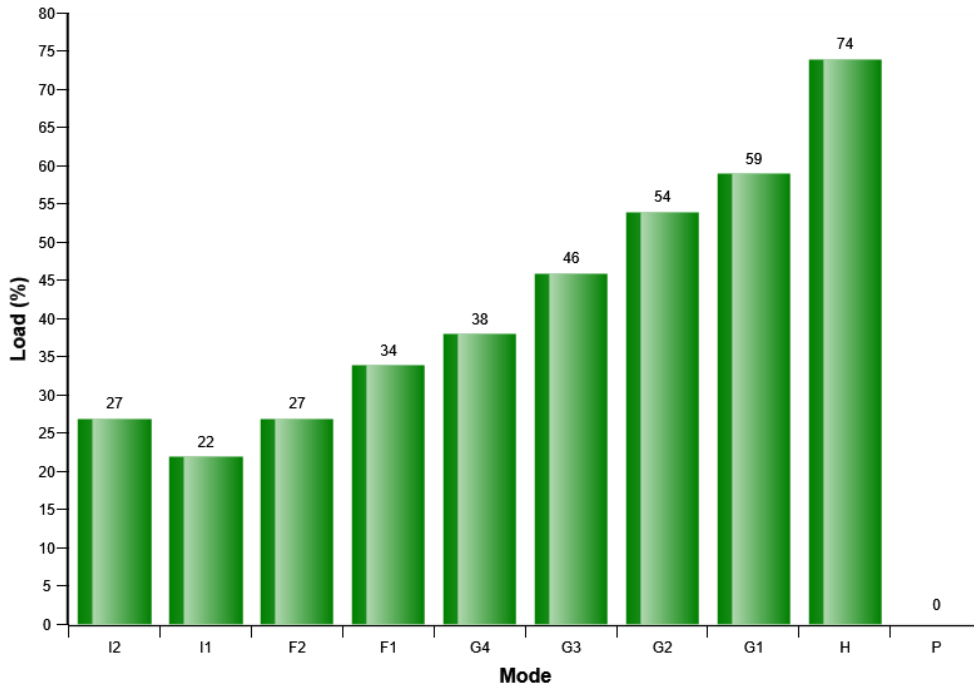


Total logged time (h) = 4753.0

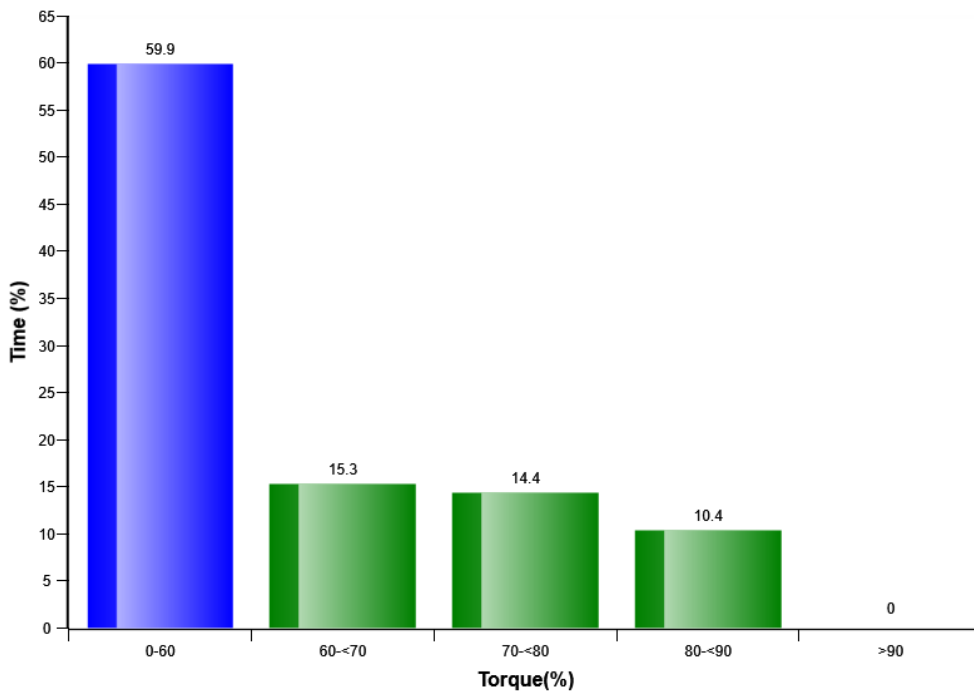


Machine model	SerialNo	Operating Hours	Reading Date
EC380E	310133	4752.8	11/30/2017

Average engine load per mode distribution (%)



Engine load on "G,H,P" speed mode distribution (%)

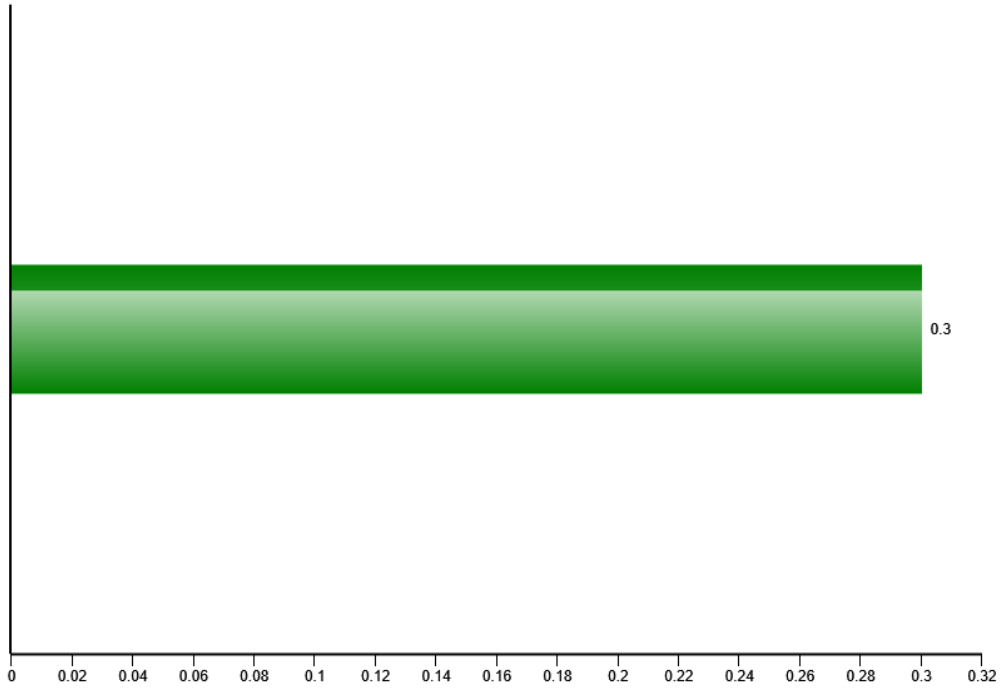


Engine time on "G,H,P" (h)= 3022.1
Total engine time (h)= 4753.0

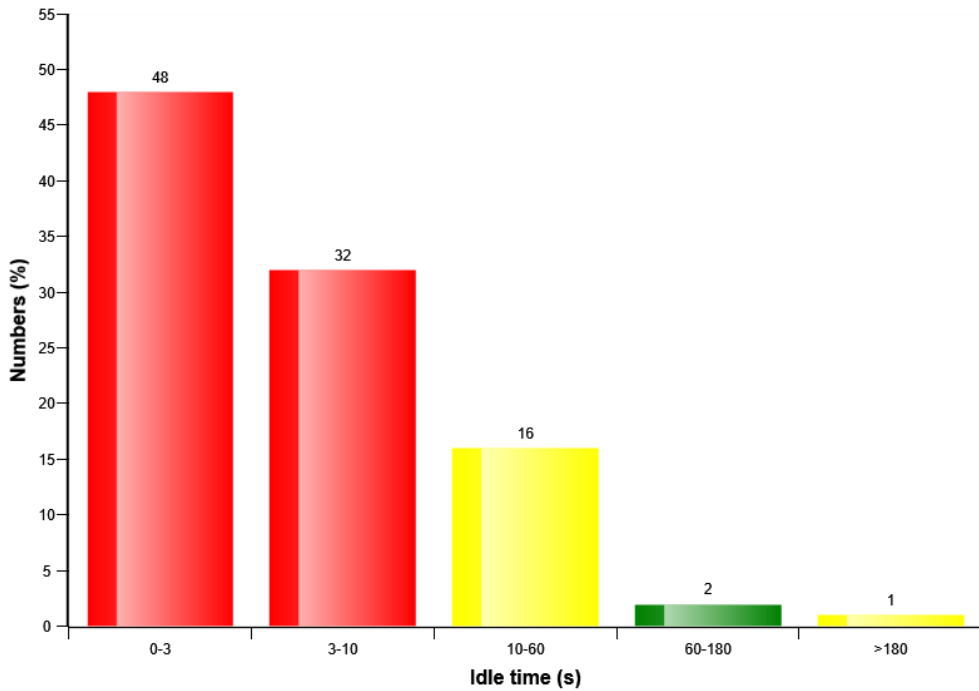


Machine model	SerialNo	Operating Hours	Reading Date
EC380E	310133	4752.8	11/30/2017

Average number of starts per hour



Idle time before shut down (%)

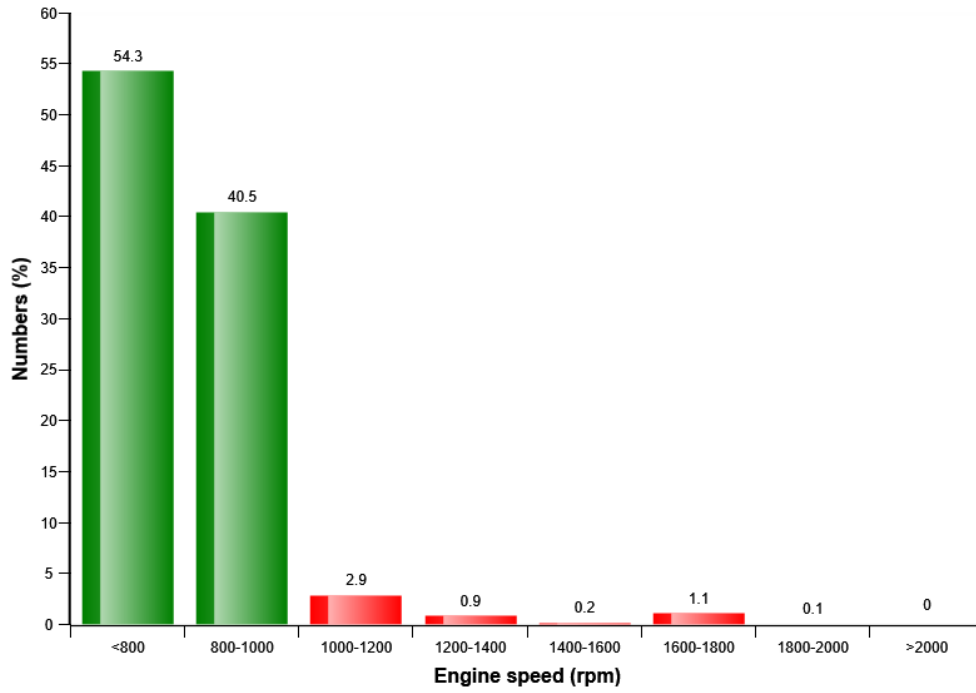


Low speed shutdown= 1353
 Total number of engine shutdowns= 1428

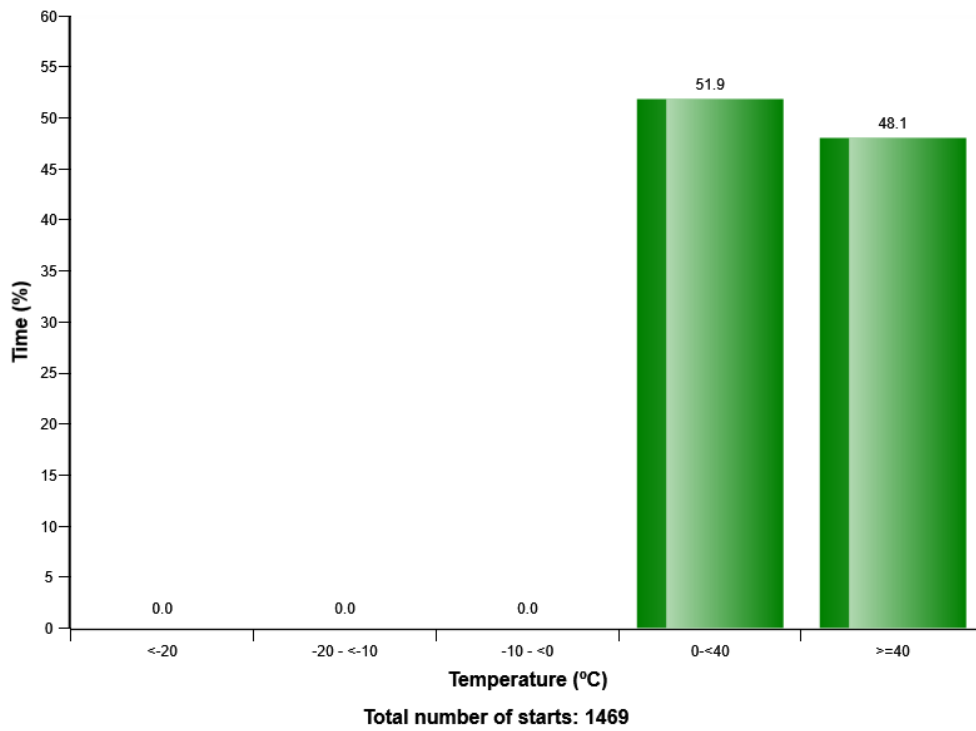


Machine model	SerialNo	Operating Hours	Reading Date
EC380E	310133	4752.8	11/30/2017

Engine shut down numbers per engine speed mode distribution (%)

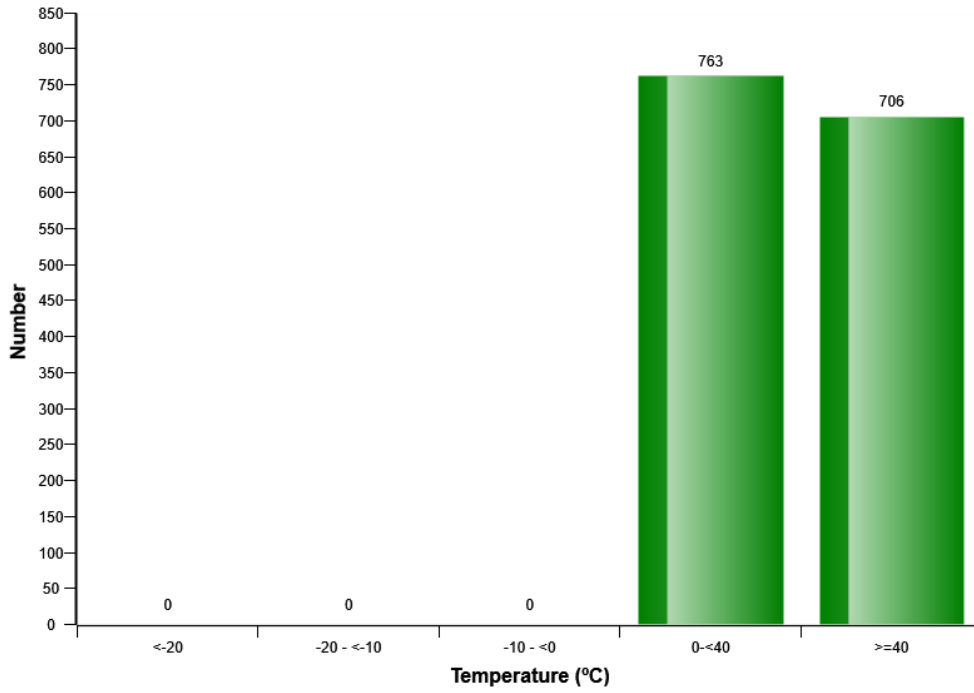


Start at different engine coolant temperatures (%)

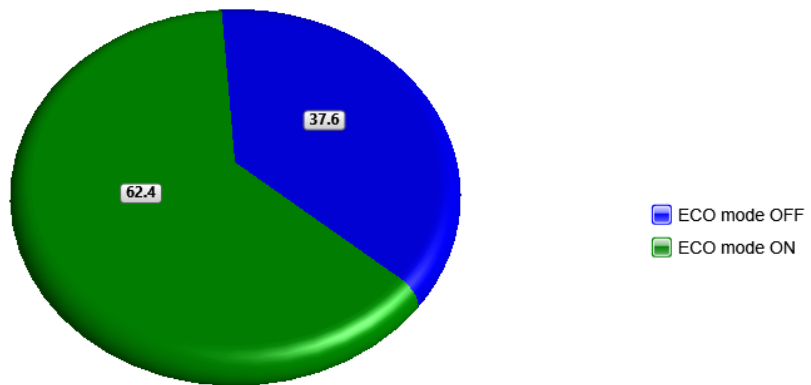


Machine model	SerialNo	Operating Hours	Reading Date
EC380E	310133	4752.8	11/30/2017

Start at different engine coolant temperatures



ECO mode distribution (%)



Total engine time (h)= 4753.0



Machine model	SerialNo	Operating Hours	Reading Date
EC380E	310133	4752.8	11/30/2017

Low engine oil level at start
Total number of occurrences = 0

Op hours	Year	Month	Day	Hour	Minute
* 0	2000	0	0	0	0
* 0	2000	0	0	0	0
* 0	2000	0	0	0	0
* 0	2000	0	0	0	0
* 0	2000	0	0	0	0
* 0	2000	0	0	0	0
* 0	2000	0	0	0	0
* 0	2000	0	0	0	0
* 0	2000	0	0	0	0
* 0	2000	0	0	0	0
* 0	2000	0	0	0	0
* 0	2000	0	0	0	0
* 0	2000	0	0	0	0
* 0	2000	0	0	0	0
* 0	2000	0	0	0	0
* 0	2000	0	0	0	0
* 0	2000	0	0	0	0
* 0	2000	0	0	0	0
* 0	2000	0	0	0	0
* 0	2000	0	0	0	0
* 0	2000	0	0	0	0
* 0	2000	0	0	0	0



Machine model	SerialNo	Operating Hours	Reading Date
EC380E	310133	4752.8	11/30/2017

Fuel Filter Clogging
Total number Fuel filter clogging = 256

Op hours	Year	Month	Day	Hour	Minute	Duration (minutes)
* 7698	2009	23	5	15	231	0
* 0	2000	0	0	0	0	0
* 0	2000	0	0	0	0	0
* 0	2000	0	0	0	0	0
* 0	2000	0	0	0	0	0
* 0	2000	0	0	0	0	0
* 0	2000	0	0	0	0	0
* 0	2000	0	0	0	0	0
* 0	2000	0	0	0	0	0
* 0	2000	0	0	0	0	0
* 0	2000	0	0	0	0	0
* 0	2000	0	0	0	0	0
* 0	2000	0	0	0	0	0
* 0	2000	0	0	0	0	0
* 0	2000	0	0	0	0	0
* 0	2000	0	0	0	0	0
* 0	2000	0	0	0	0	0
* 0	2000	0	0	0	0	0
* 0	2000	0	0	0	0	0
* 0	2000	0	0	0	0	0
* 0	2000	0	0	0	0	0
* 0	2000	0	0	0	0	0
* 0	2000	0	0	0	0	0
* 0	2000	0	0	0	0	0



Machine model	SerialNo	Operating Hours	Reading Date
EC380E	310133	4752.8	11/30/2017

**High Charge air temperature
Total number of occurrences = 0**

Op hours	Year	Month	Day	Hour	Minute	Duration (sec)	Extreme (°C)
0	2000	0	0	0	0	0	0
0	2000	0	0	0	0	0	0
0	2000	0	0	0	0	0	0
0	2000	0	0	0	0	0	0
0	2000	0	0	0	0	0	0
0	2000	0	0	0	0	0	0
0	2000	0	0	0	0	0	0
0	2000	0	0	0	0	0	0
0	2000	0	0	0	0	0	0
0	2000	0	0	0	0	0	0
0	2000	0	0	0	0	0	0
0	2000	0	0	0	0	0	0
0	2000	0	0	0	0	0	0
0	2000	0	0	0	0	0	0
0	2000	0	0	0	0	0	0
0	2000	0	0	0	0	0	0
0	2000	0	0	0	0	0	0
0	2000	0	0	0	0	0	0
0	2000	0	0	0	0	0	0
0	2000	0	0	0	0	0	0
0	2000	0	0	0	0	0	0
0	2000	0	0	0	0	0	0
0	2000	0	0	0	0	0	0
0	2000	0	0	0	0	0	0
0	2000	0	0	0	0	0	0



Machine model	SerialNo	Operating Hours	Reading Date
EC380E	310133	4752.8	11/30/2017

Regeneration ignored
Total number of occurrences = 4864

Op hours	Year	Month	Day	Hour	Minute	Duration (min)
* 570	2016	19	6	17	126	1
* 1031	2014	19	6	17	125	6
* 1286	2008	19	6	17	124	2
* 1837	2016	19	6	17	126	4
* 2318	2010	19	6	17	124	10
* 5155	2010	19	6	17	124	20
* 5391	2015	19	6	17	125	12
* 5399	2006	20	6	17	127	58
* 6409	2013	20	6	17	133	4
* 7706	2007	20	6	17	128	312
* 7715	2007	19	6	17	124	10
* 10276	2010	19	6	17	124	6
* 10297	2007	19	6	17	124	4
* 10755	2017	19	6	17	127	28
* 10787	2016	19	6	17	126	48
* 11285	2015	19	6	17	126	0
* 11319	2015	19	6	17	126	0
* 12082	2005	20	6	17	127	2
* 13114	2011	19	6	17	124	0
* 13613	2012	19	6	17	124	58



Machine model	SerialNo	Operating Hours	Reading Date
EC380E	310133	4752.8	11/30/2017

High engine coolant temperature
Total number of occurrences = 0

Op hours	Year	Month	Day	Hour	Minute	Duration (sec)	Extreme (° C)
0	2000	0	0	0	0	0	0
0	2000	0	0	0	0	0	0
0	2000	0	0	0	0	0	0
0	2000	0	0	0	0	0	0
0	2000	0	0	0	0	0	0
0	2000	0	0	0	0	0	0
0	2000	0	0	0	0	0	0
0	2000	0	0	0	0	0	0
0	2000	0	0	0	0	0	0
0	2000	0	0	0	0	0	0
0	2000	0	0	0	0	0	0
0	2000	0	0	0	0	0	0
0	2000	0	0	0	0	0	0
0	2000	0	0	0	0	0	0
0	2000	0	0	0	0	0	0
0	2000	0	0	0	0	0	0
0	2000	0	0	0	0	0	0
0	2000	0	0	0	0	0	0
0	2000	0	0	0	0	0	0
0	2000	0	0	0	0	0	0
0	2000	0	0	0	0	0	0
0	2000	0	0	0	0	0	0



Machine model	SerialNo	Operating Hours	Reading Date
EC380E	310133	4752.8	11/30/2017

**Water level warning in water separator
Total number of occurences = 0**

	Op hours	Year	Month	Day	Hour	Minute	Duration (min)
*	0	2000	0	0	0	0	0
*	0	2000	0	0	0	0	0
*	0	2000	0	0	0	0	0
*	0	2000	0	0	0	0	0
*	0	2000	0	0	0	0	0
*	0	2000	0	0	0	0	0
*	0	2000	0	0	0	0	0
*	0	2000	0	0	0	0	0
*	0	2000	0	0	0	0	0
*	0	2000	0	0	0	0	0
*	0	2000	0	0	0	0	0
*	0	2000	0	0	0	0	0
*	0	2000	0	0	0	0	0
*	0	2000	0	0	0	0	0
*	0	2000	0	0	0	0	0
*	0	2000	0	0	0	0	0
*	0	2000	0	0	0	0	0
*	0	2000	0	0	0	0	0
*	0	2000	0	0	0	0	0
*	0	2000	0	0	0	0	0
*	0	2000	0	0	0	0	0
*	0	2000	0	0	0	0	0
*	0	2000	0	0	0	0	0
*	0	2000	0	0	0	0	0
*	0	2000	0	0	0	0	0
*	0	2000	0	0	0	0	0
*	0	2000	0	0	0	0	0
*	0	2000	0	0	0	0	0
*	0	2000	0	0	0	0	0
*	0	2000	0	0	0	0	0
*	0	2000	0	0	0	0	0
*	0	2000	0	0	0	0	0
*	0	2000	0	0	0	0	0
*	0	2000	0	0	0	0	0
*	0	2000	0	0	0	0	0
*	0	2000	0	0	0	0	0
*	0	2000	0	0	0	0	0
*	0	2000	0	0	0	0	0
*	0	2000	0	0	0	0	0
*	0	2000	0	0	0	0	0
*	0	2000	0	0	0	0	0
*	0	2000	0	0	0	0	0
*	0	2000	0	0	0	0	0
*	0	2000	0	0	0	0	0
*	0	2000	0	0	0	0	0
*	0	2000	0	0	0	0	0
*	0	2000	0	0	0	0	0



Machine model	SerialNo	Operating Hours	Reading Date
EC380E	310133	4752.8	11/30/2017

Regeneration duration
Total number of occurrences = 0

Op hours	Year	Month	Day	Hour	Minute	Duration (min)
* 23	2016	30	1	16	212	51
* 788	2011	8	2	15	83	42
* 789	2008	8	2	15	80	5
* 2101	2007	8	2	15	79	0
* 3622	2015	6	2	15	65	9
* 4631	2011	28	4	16	78	21
* 5691	2019	3	9	15	210	35
* 6177	2016	7	1	16	90	51
* 7176	2019	17	3	15	6	50
* 8735	2015	7	2	15	76	13
* 8964	2016	3	5	16	79	9
* 9525	2015	6	2	15	65	1
* 9776	2016	26	8	15	148	51
* 10523	2017	3	2	16	249	51
* 10530	2016	25	1	16	194	51
* 11307	2018	10	3	15	202	37
* 13065	2016	11	2	16	46	51
* 13079	2017	6	2	15	67	14
* 13079	2011	16	2	16	70	65
* 14853	2017	9	3	16	234	50



Machine model	SerialNo	Operating Hours	Reading Date
EC380E	310133	4752.8	11/30/2017

Regeneration aborted
Total number of occurrences = 2560

Op hours	Year	Month	Day	Hour	Minute	Reason
* 0	2000	0	0	0	0	0
* 0	2000	0	0	0	0	0
* 0	2000	0	0	0	0	0
* 0	2000	0	0	0	0	0
* 0	2000	0	0	0	0	0
* 0	2000	0	0	0	0	0
* 0	2000	0	0	0	0	0
* 0	2000	0	0	0	0	0
* 0	2000	0	0	0	0	0
* 0	2000	0	0	0	0	0
* 0	2000	0	0	0	0	0
* 0	2000	0	0	0	0	0
* 1295	2018	6	2	15	67	1
* 1556	2008	8	2	15	80	2
* 2081	2008	8	2	15	80	2
* 2104	2007	8	2	15	79	2
* 4656	2015	6	2	15	65	2
* 5430	2012	16	2	16	70	2
* 5942	2015	6	2	15	65	2
* 9770	2015	6	2	15	65	2
* 9986	2011	28	4	16	78	2
* 12063	2015	7	2	15	77	2



Machine model	SerialNo	Operating Hours	Reading Date
EC380E	310133	4752.8	11/30/2017

**Low Air filter pressure
Total number of occurrences = 0**

Op hours	Year	Month	Day	Hour	Minute	Duration (seconds)
0	2000	0	0	0	0	0
0	2000	0	0	0	0	0
0	2000	0	0	0	0	0
0	2000	0	0	0	0	0
0	2000	0	0	0	0	0
0	2000	0	0	0	0	0
0	2000	0	0	0	0	0
0	2000	0	0	0	0	0
0	2000	0	0	0	0	0
0	2000	0	0	0	0	0
0	2000	0	0	0	0	0
0	2000	0	0	0	0	0
0	2000	0	0	0	0	0
0	2000	0	0	0	0	0
0	2000	0	0	0	0	0
0	2000	0	0	0	0	0
0	2000	0	0	0	0	0
0	2000	0	0	0	0	0
0	2000	0	0	0	0	0
0	2000	0	0	0	0	0
0	2000	0	0	0	0	0



Machine model	SerialNo	Operating Hours	Reading Date
EC380E	310133	4752.8	11/30/2017

AC High Pressure
Total number of occurrences = 0

Op hours	Year	Month	Day	Hour	Minute	Duration (seconds)	Ambient temperature (°C)
0	2000	0	0	0	0	0	0
0	2000	0	0	0	0	0	0
0	2000	0	0	0	0	0	0
0	2000	0	0	0	0	0	0
0	2000	0	0	0	0	0	0
0	2000	0	0	0	0	0	0
0	2000	0	0	0	0	0	0
0	2000	0	0	0	0	0	0
0	2000	0	0	0	0	0	0
0	2000	0	0	0	0	0	0
0	2000	0	0	0	0	0	0
0	2000	0	0	0	0	0	0
0	2000	0	0	0	0	0	0
0	2000	0	0	0	0	0	0
0	2000	0	0	0	0	0	0
0	2000	0	0	0	0	0	0
0	2000	0	0	0	0	0	0
0	2000	0	0	0	0	0	0
0	2000	0	0	0	0	0	0
0	2000	0	0	0	0	0	0
0	2000	0	0	0	0	0	0
0	2000	0	0	0	0	0	0
0	2000	0	0	0	0	0	0
0	2000	0	0	0	0	0	0
0	2000	0	0	0	0	0	0
0	2000	0	0	0	0	0	0
0	2000	0	0	0	0	0	0



Machine model	SerialNo	Operating Hours	Reading Date
EC380E	310133	4752.8	11/30/2017

AC System Cut Out Pressure
Total number of occurrences = 0

Op hours	Year	Month	Day	Hour	Minute	Duration (sec)	Extreme (° F)
0	2000	0	0	0	0	0	0
0	2000	0	0	0	0	0	0
0	2000	0	0	0	0	0	0
0	2000	0	0	0	0	0	0
0	2000	0	0	0	0	0	0
0	2000	0	0	0	0	0	0
0	2000	0	0	0	0	0	0
0	2000	0	0	0	0	0	0
0	2000	0	0	0	0	0	0
0	2000	0	0	0	0	0	0
0	2000	0	0	0	0	0	0
0	2000	0	0	0	0	0	0
0	2000	0	0	0	0	0	0
0	2000	0	0	0	0	0	0
0	2000	0	0	0	0	0	0
0	2000	0	0	0	0	0	0
0	2000	0	0	0	0	0	0
0	2000	0	0	0	0	0	0
0	2000	0	0	0	0	0	0
0	2000	0	0	0	0	0	0
0	2000	0	0	0	0	0	0
0	2000	0	0	0	0	0	0
0	2000	0	0	0	0	0	0
0	2000	0	0	0	0	0	0
0	2000	0	0	0	0	0	0
0	2000	0	0	0	0	0	0
0	2000	0	0	0	0	0	0
0	2000	0	0	0	0	0	0
0	2000	0	0	0	0	0	0
0	2000	0	0	0	0	0	0
0	2000	0	0	0	0	0	0
0	2000	0	0	0	0	0	0
0	2000	0	0	0	0	0	0
0	2000	0	0	0	0	0	0
0	2000	0	0	0	0	0	0
0	2000	0	0	0	0	0	0
0	2000	0	0	0	0	0	0
0	2000	0	0	0	0	0	0
0	2000	0	0	0	0	0	0
0	2000	0	0	0	0	0	0
0	2000	0	0	0	0	0	0
0	2000	0	0	0	0	0	0
0	2000	0	0	0	0	0	0
0	2000	0	0	0	0	0	0
0	2000	0	0	0	0	0	0
0	2000	0	0	0	0	0	0
0	2000	0	0	0	0	0	0
0	2000	0	0	0	0	0	0
0	2000	0	0	0	0	0	0
0	2000	0	0	0	0	0	0
0	2000	0	0	0	0	0	0
0	2000	0	0	0	0	0	0
0	2000	0	0	0	0	0	0
0	2000	0	0	0	0	0	0
0	2000	0	0	0	0	0	0
0	2000	0	0	0	0	0	0
0	2000	0	0	0	0	0	0
0	2000	0	0	0	0	0	0
0	2000	0	0	0	0	0	0
0	2000	0	0	0	0	0	0



Machine model	SerialNo	Operating Hours	Reading Date
EC380E	310133	4752.8	11/30/2017

Low engine oil pressure
Total number of occurrences = 1024

Op hours	Year	Month	Day	Hour	Minute	Duration (sec)	Extreme (bar)
2060	2018	27	11	17	144	2	0
2336	2015	3	11	17	141	3	0
3108	2016	20	11	17	143	3	0
3359	2008	6	11	17	142	2	0
3859	2010	3	11	17	141	2	1
3897	2010	5	11	17	142	2	0
4117	2013	22	11	17	144	3	0
4646	2007	17	11	17	143	2	0
5941	2016	27	11	17	144	3	0
6162	2016	28	11	17	144	3	0
6926	2013	22	11	17	144	1	2
8456	2009	16	11	17	143	3	0
8465	2011	28	11	17	144	3	0
10289	2018	28	11	17	144	2	0
11794	2016	28	11	17	144	1	2
11823	2009	5	11	17	141	3	0
12821	2012	27	11	17	144	3	0
12823	2013	9	11	17	142	3	0
13613	2012	27	11	17	144	1	2
15112	2016	28	11	17	144	1	2



Machine model	SerialNo	Operating Hours	Reading Date
EC380E	310133	4752.8	11/30/2017

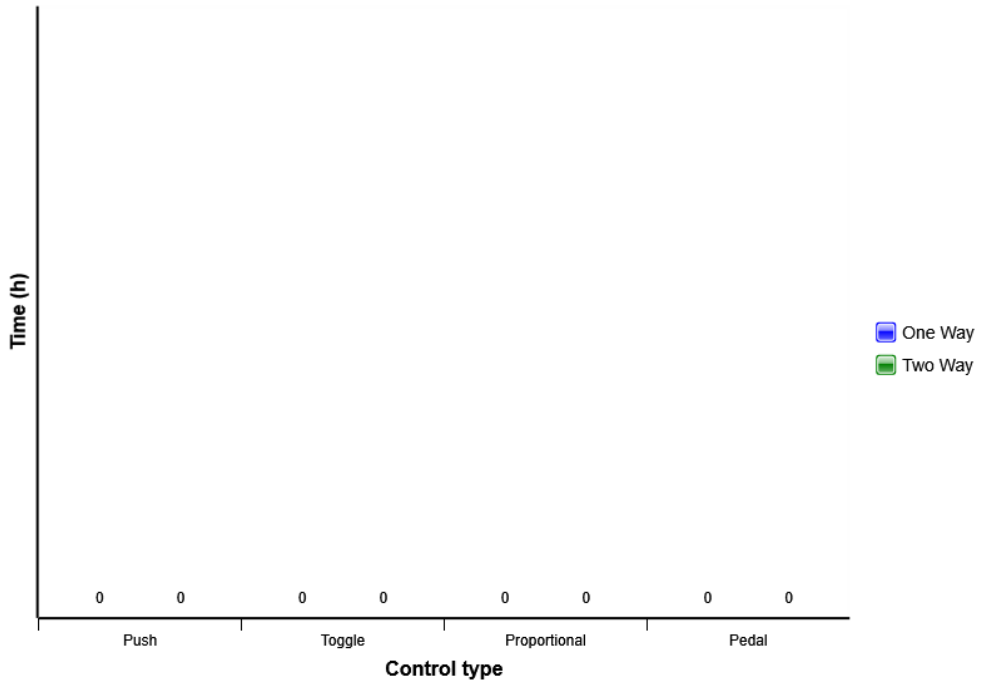
Low coolant level
Total number of occurrences = 2304

Op hours	Year	Month	Day	Hour	Minute	Duration (minutes)
* 0	2000	0	0	0	0	0
* 0	2000	0	0	0	0	0
* 0	2000	0	0	0	0	0
* 0	2000	0	0	0	0	0
* 0	2000	0	0	0	0	0
* 0	2000	0	0	0	0	0
* 0	2000	0	0	0	0	0
* 0	2000	0	0	0	0	0
* 0	2000	0	0	0	0	0
* 0	2000	0	0	0	0	0
* 0	2000	0	0	0	0	0
* 0	2000	0	0	0	0	0
* 0	2000	0	0	0	0	0
* 0	2000	0	0	0	0	0
* 40	2012	31	10	16	5	0
* 1310	2015	16	8	16	97	0
* 1842	2018	23	2	16	123	0
* 8485	2016	21	1	16	180	0
* 9222	2011	7	3	16	208	0
* 9731	2016	8	3	16	221	0
* 12323	2017	20	1	16	169	0
* 13086	2015	21	2	16	98	0
* 13355	2005	8	3	16	213	0

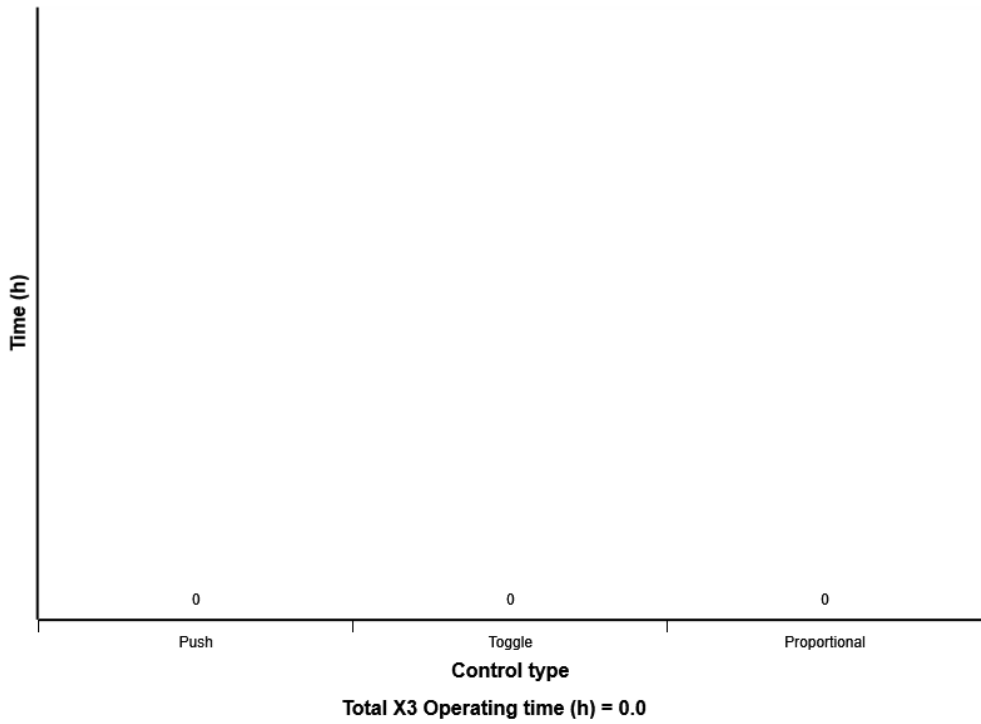


Machine model	SerialNo	Operating Hours	Reading Date
EC380E	310133	4752.8	11/30/2017

X1 control distribution

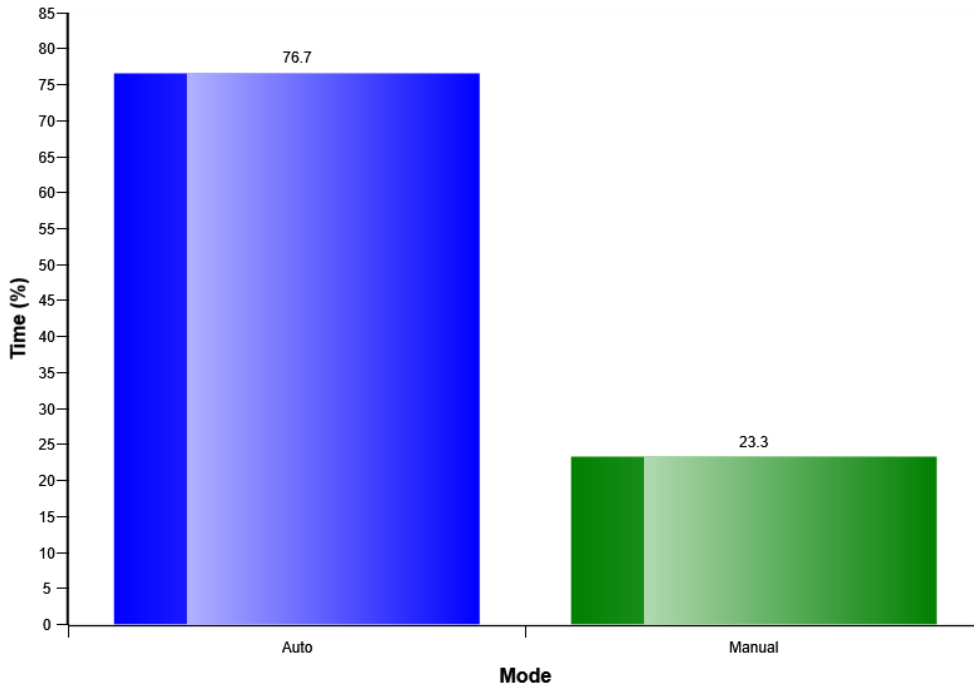


X3 Control distribution

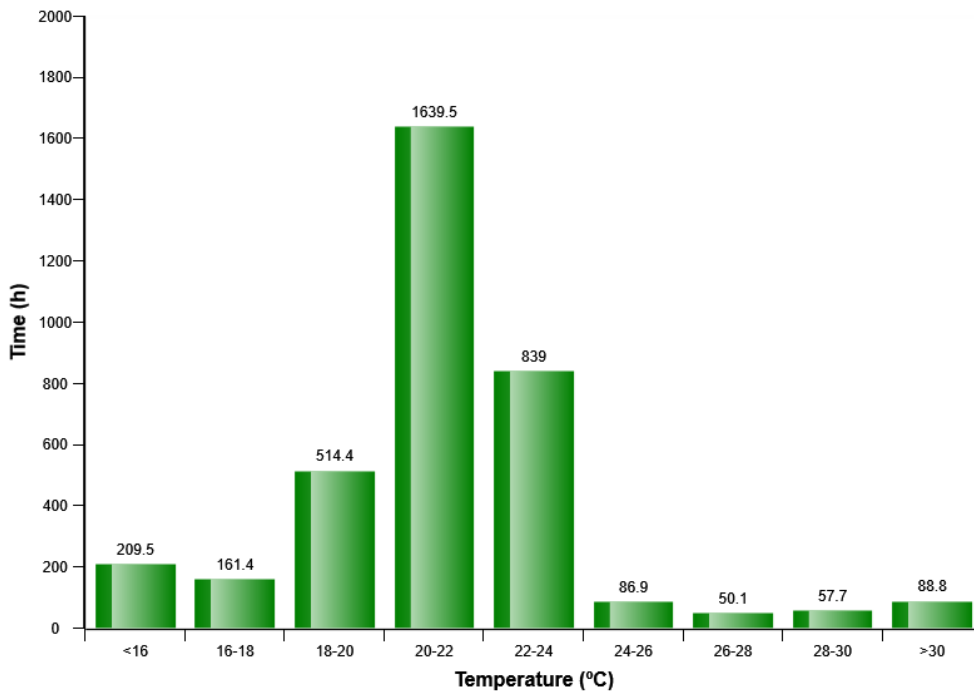


Machine model	SerialNo	Operating Hours	Reading Date
EC380E	310133	4752.8	11/30/2017

HVAC Auto - Manual mode selection distribution (%)

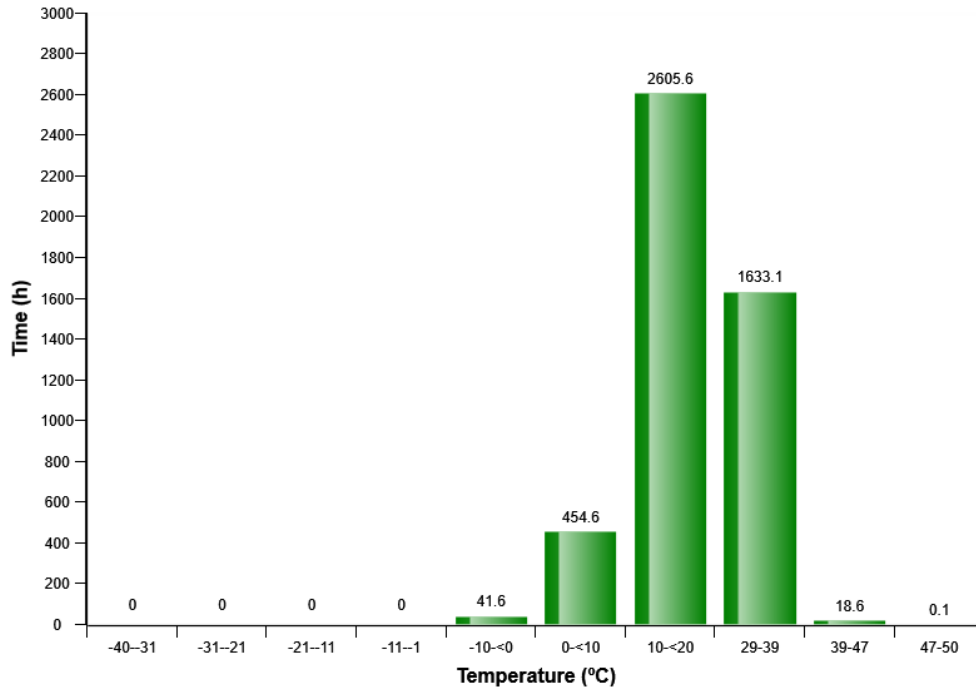


HVAC air temperature setting in auto control mode distribution (h)

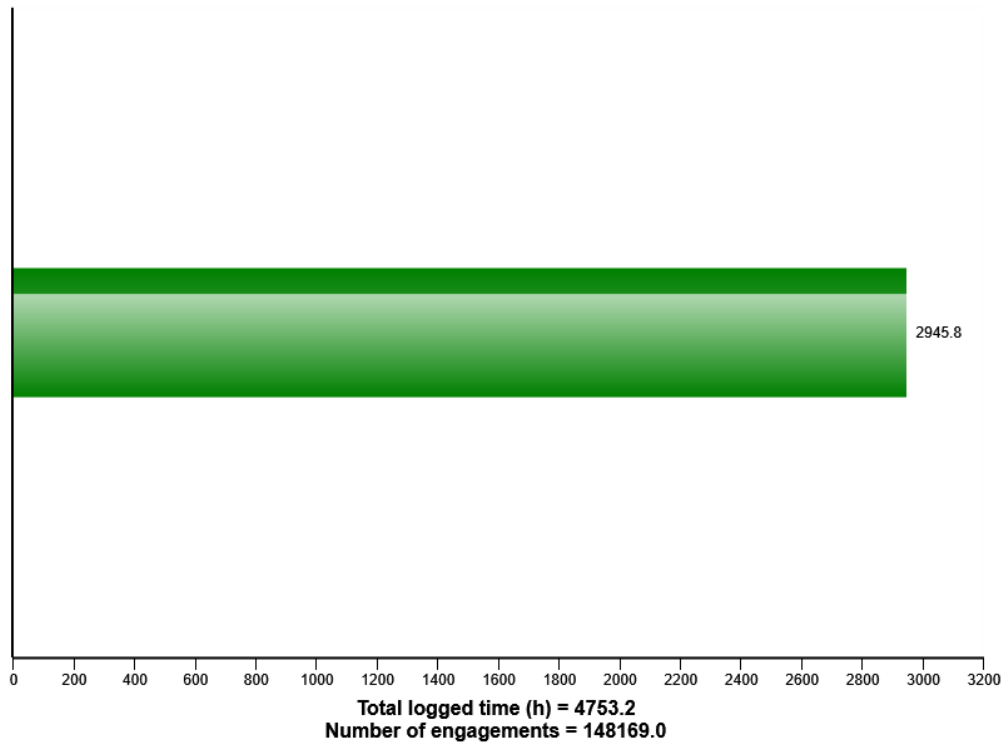


Machine model	SerialNo	Operating Hours	Reading Date
EC380E	310133	4752.8	11/30/2017

Machine ambient temperature distribution (h)

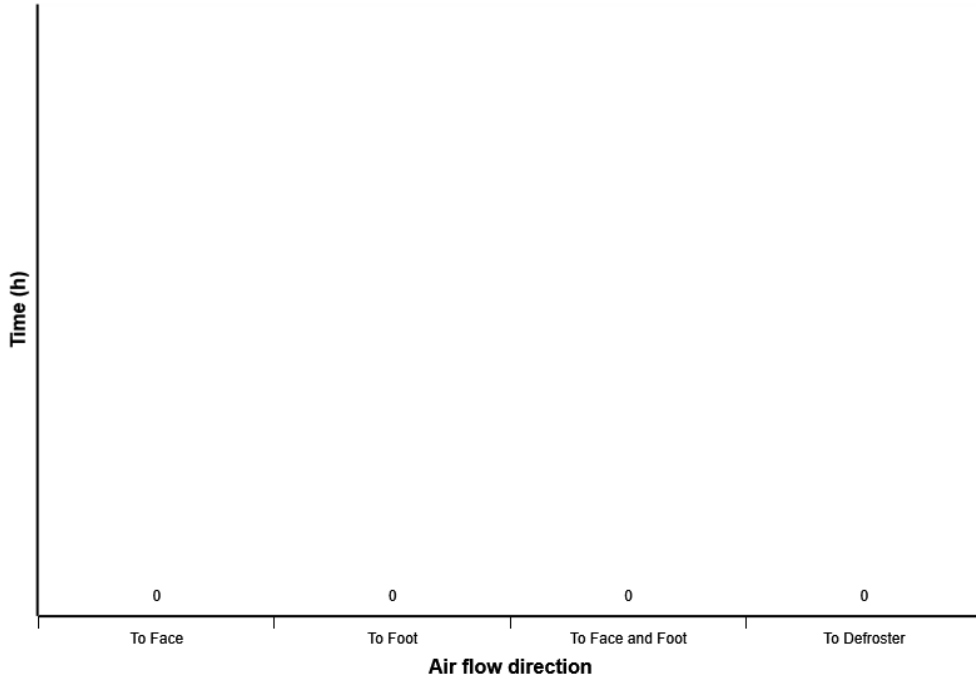


AC Compressor usage

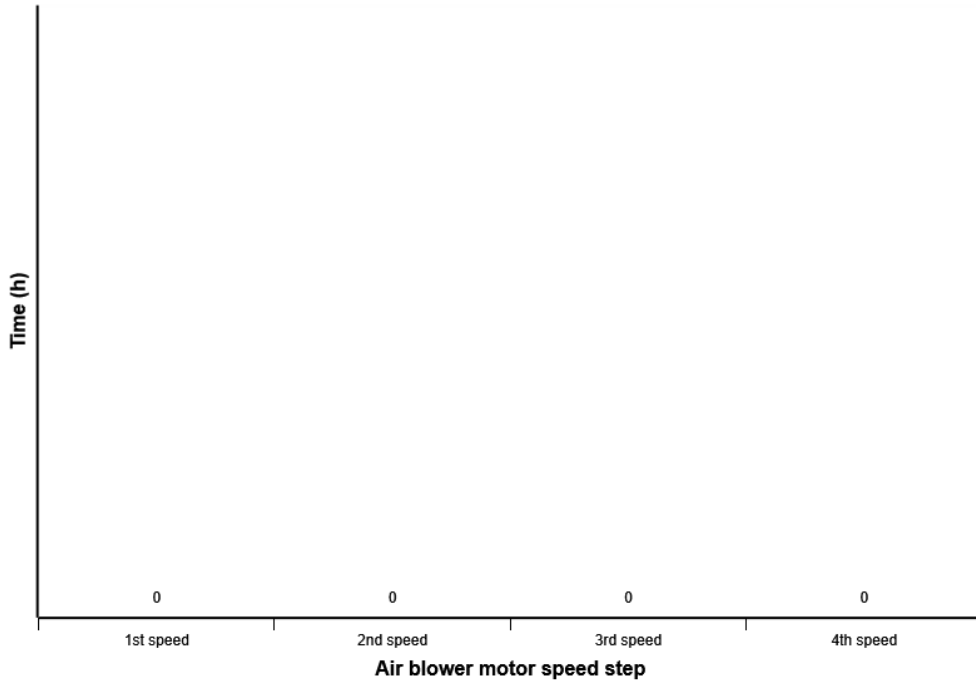


Machine model	SerialNo	Operating Hours	Reading Date
EC380E	310133	4752.8	11/30/2017

HVAC air flow direction in manual mode distribution (h)



HVAC air blower motor speed in manual mode distribution (h)



Machine model	SerialNo	Operating Hours	Reading Date
EC380E	310133	4752.8	11/30/2017

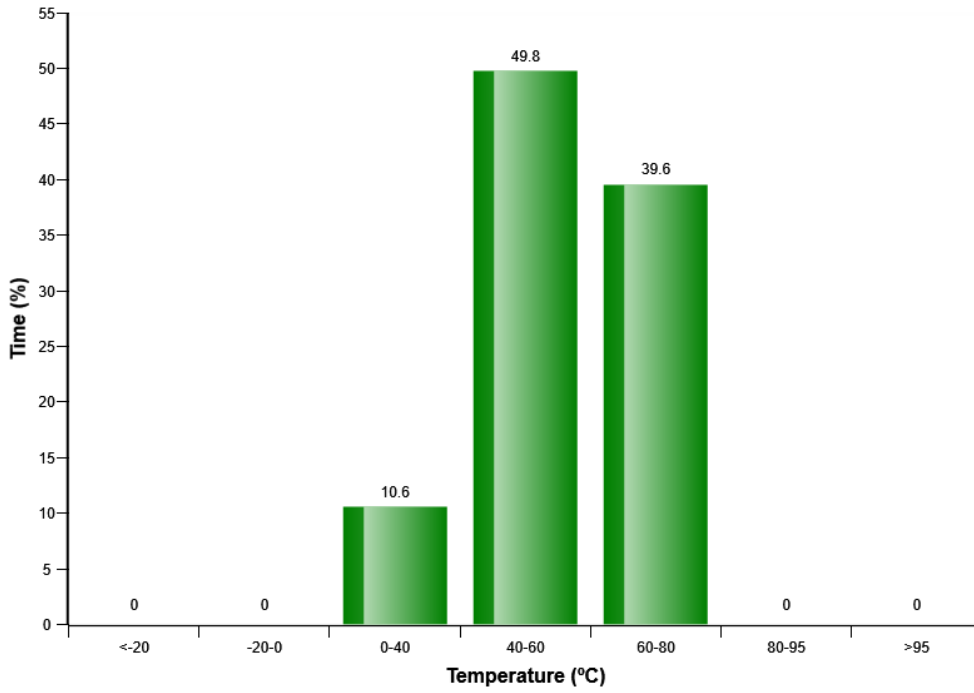
High hydraulic oil temperature
Total number of occurences = 0

Op hours	Year	Month	Day	Hour	Minute	Duration (seconds)	Extreme (° C)
0	2000	0	0	0	0	0	0
0	2000	0	0	0	0	0	0
0	2000	0	0	0	0	0	0
0	2000	0	0	0	0	0	0
0	2000	0	0	0	0	0	0
0	2000	0	0	0	0	0	0
0	2000	0	0	0	0	0	0
0	2000	0	0	0	0	0	0
0	2000	0	0	0	0	0	0
0	2000	0	0	0	0	0	0
0	2000	0	0	0	0	0	0
0	2000	0	0	0	0	0	0
0	2000	0	0	0	0	0	0
0	2000	0	0	0	0	0	0
0	2000	0	0	0	0	0	0
0	2000	0	0	0	0	0	0
0	2000	0	0	0	0	0	0
0	2000	0	0	0	0	0	0
0	2000	0	0	0	0	0	0
0	2000	0	0	0	0	0	0
0	2000	0	0	0	0	0	0
0	2000	0	0	0	0	0	0
0	2000	0	0	0	0	0	0
0	2000	0	0	0	0	0	0
0	2000	0	0	0	0	0	0
0	2000	0	0	0	0	0	0
0	2000	0	0	0	0	0	0
0	2000	0	0	0	0	0	0
0	2000	0	0	0	0	0	0
0	2000	0	0	0	0	0	0
0	2000	0	0	0	0	0	0
0	2000	0	0	0	0	0	0
0	2000	0	0	0	0	0	0
0	2000	0	0	0	0	0	0
0	2000	0	0	0	0	0	0

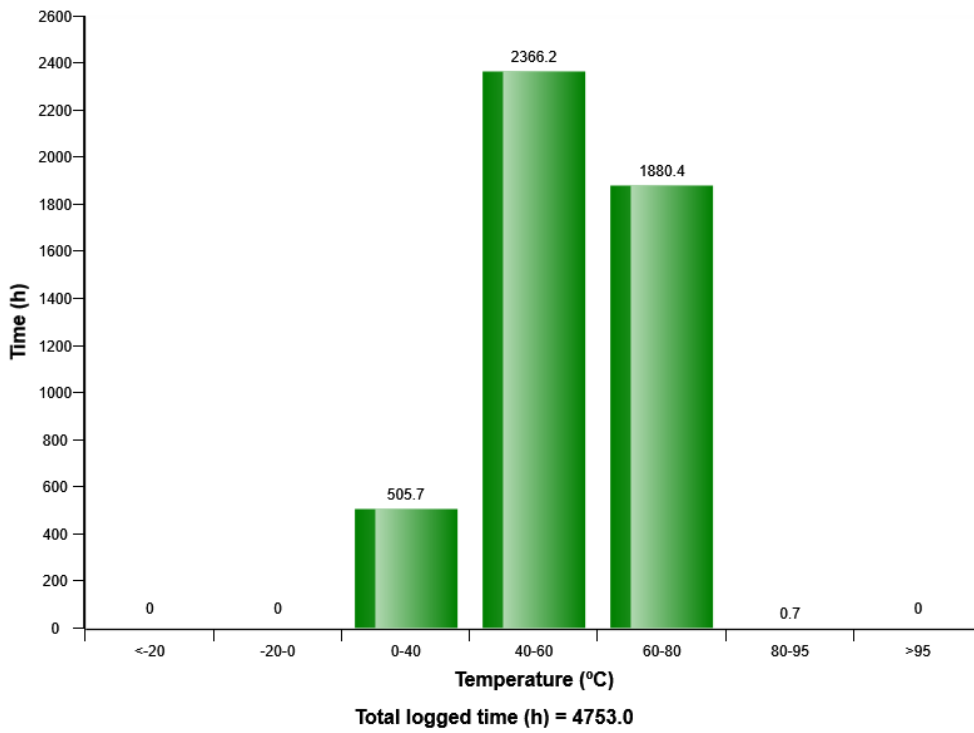


Machine model	SerialNo	Operating Hours	Reading Date
EC380E	310133	4752.8	11/30/2017

Hydraulic oil, temperature distribution (%)

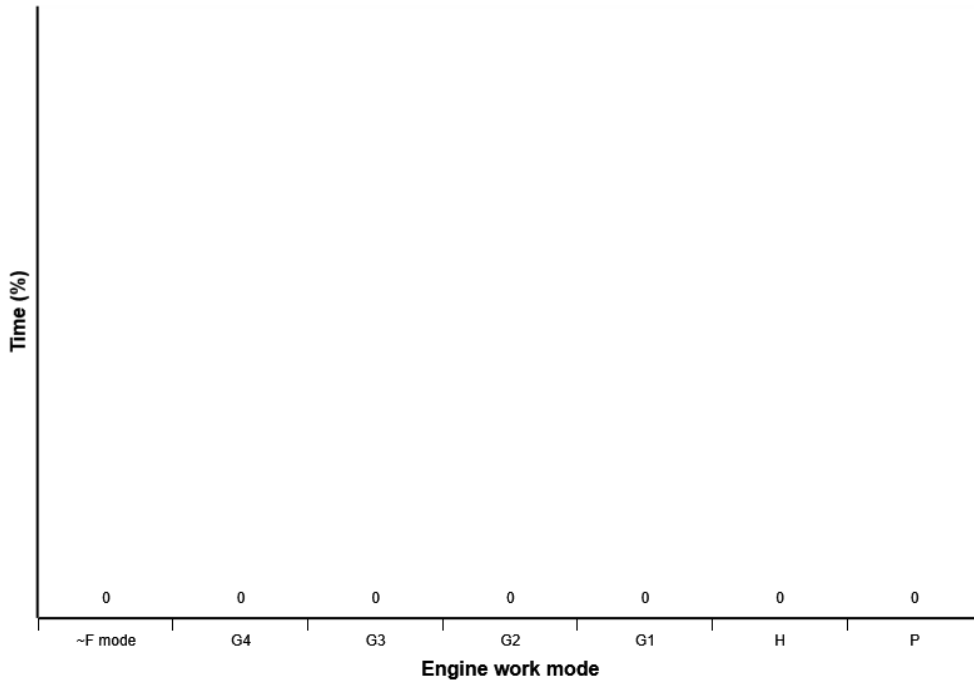


Hydraulic oil, temperature distribution (h)

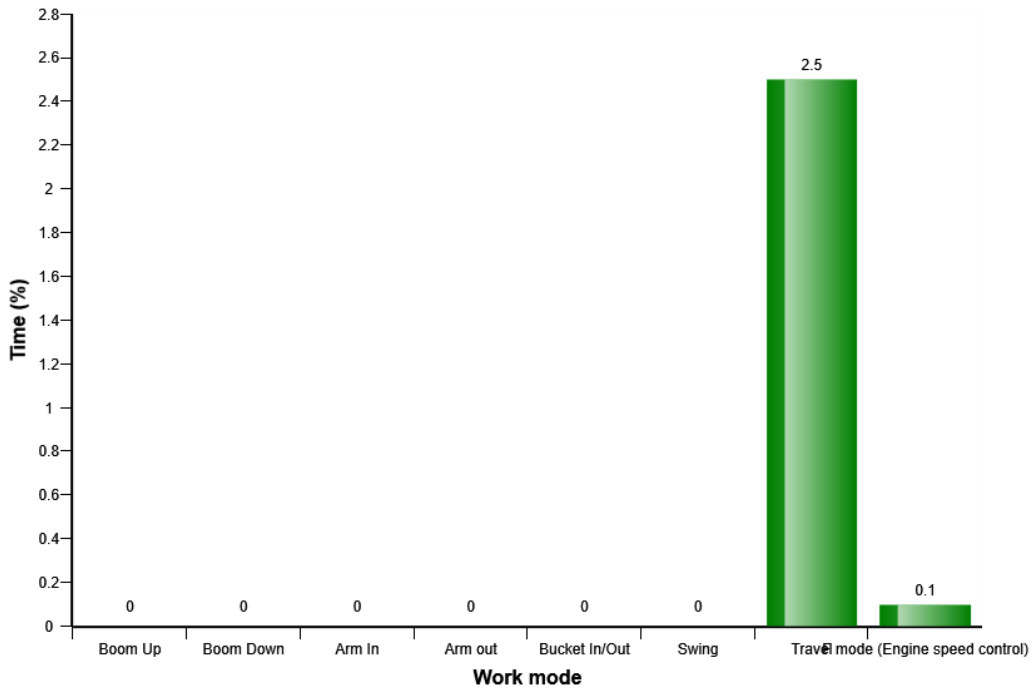


Machine model	SerialNo	Operating Hours	Reading Date
EC380E	310133	4752.8	11/30/2017

Hydraulic hammer/shear, operating distribution on mode(%)



Hydraulic Power boosted working operation distribution (%)

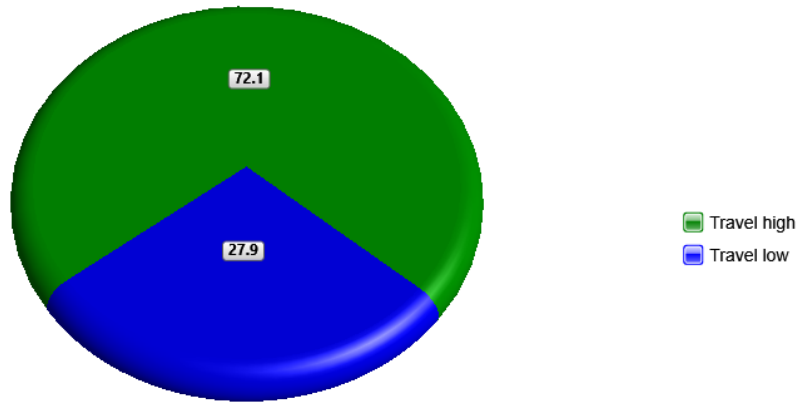


Boost and solenoid ON (h) = 0.2
 Boost solenoid ON, F mode (h) = 8.2

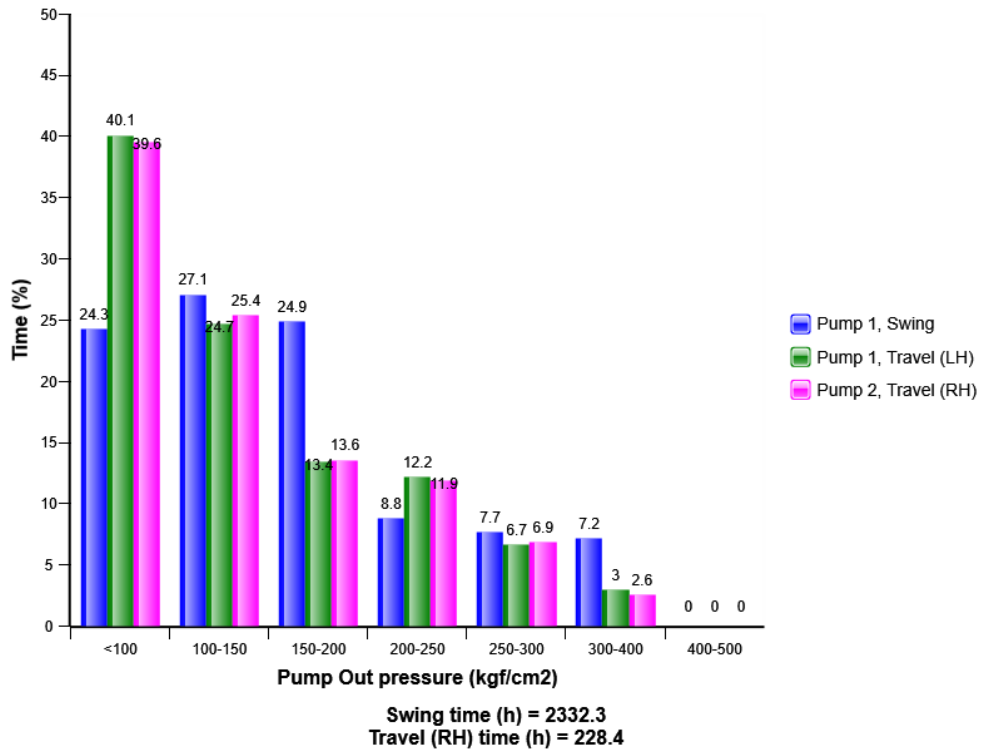


Machine model	SerialNo	Operating Hours	Reading Date
EC380E	310133	4752.8	11/30/2017

Travel speed, high/low (%)

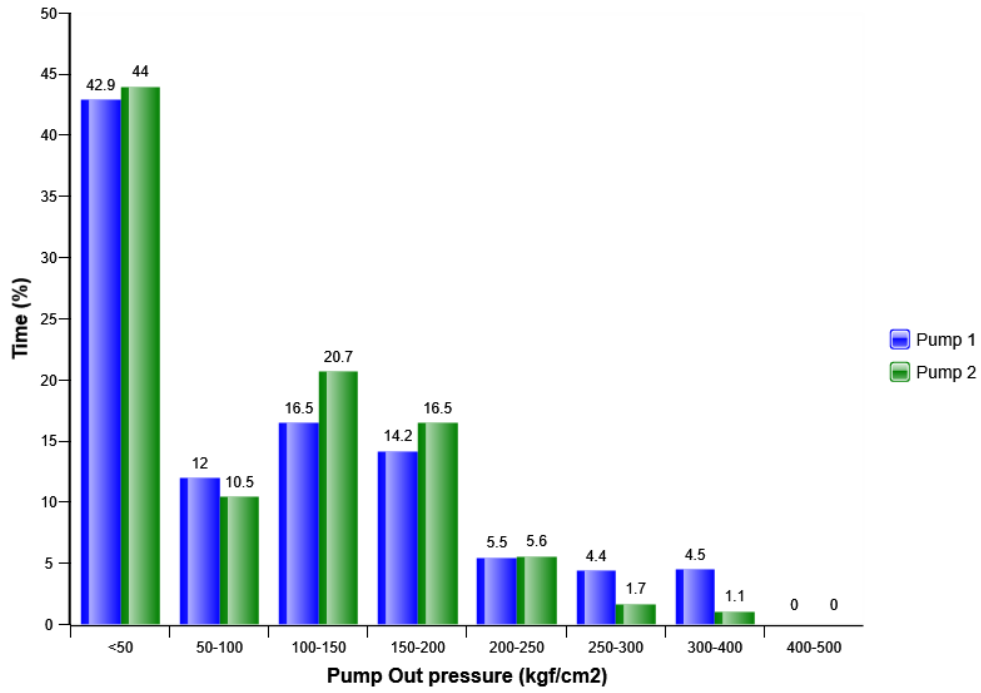


Pump pressure on travel and swing distribution (%)

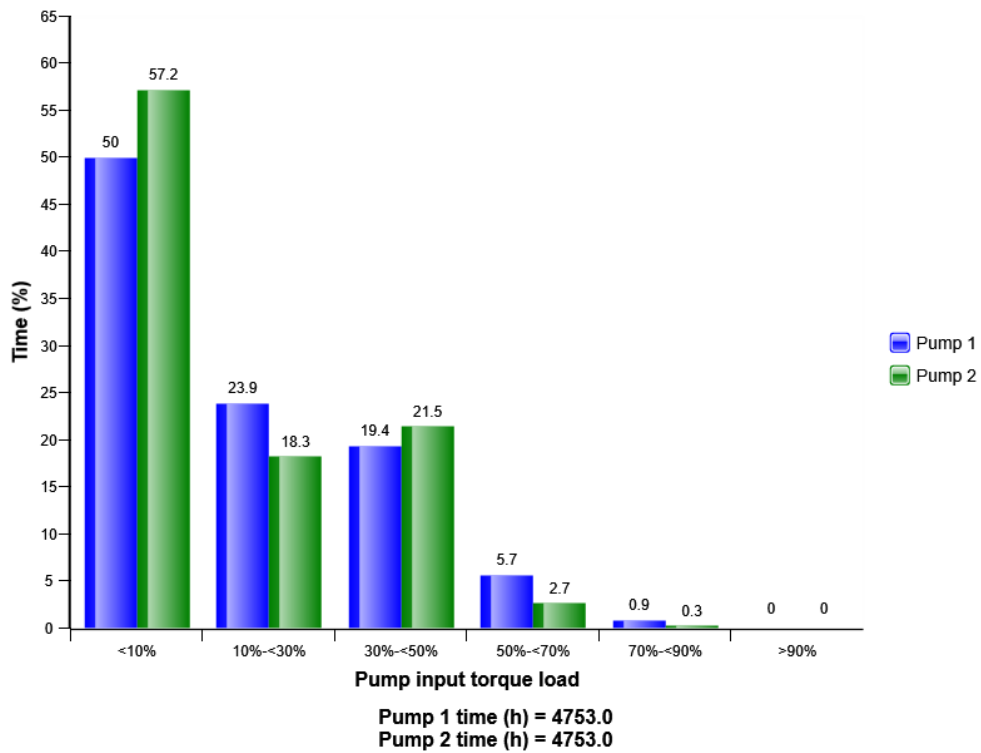


Machine model	SerialNo	Operating Hours	Reading Date
EC380E	310133	4752.8	11/30/2017

Pump pressure overall distribution (%)

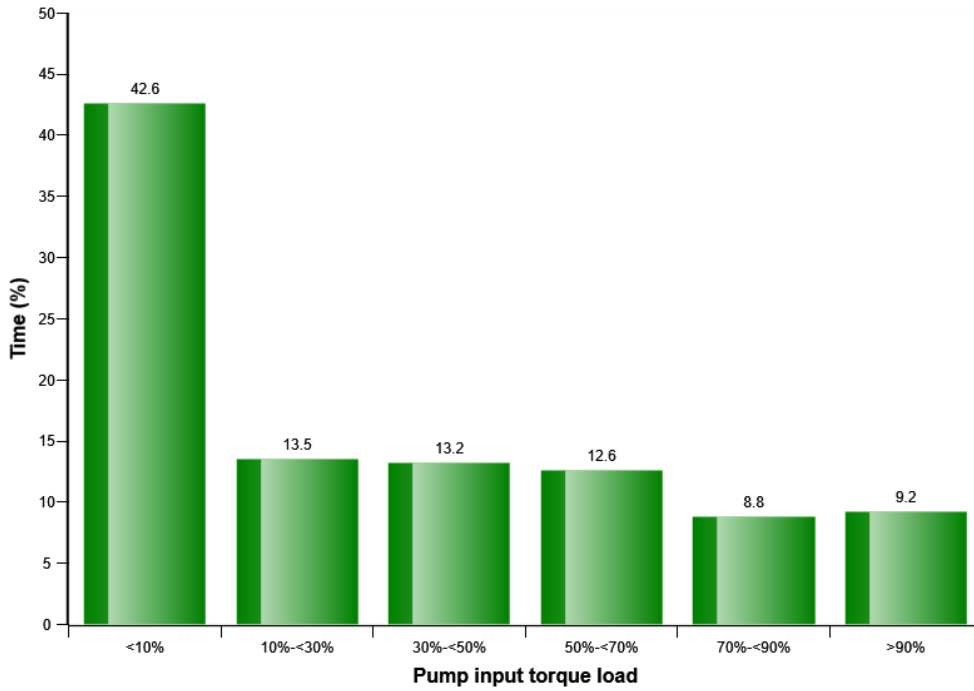


Pump input torque overall distribution (%)

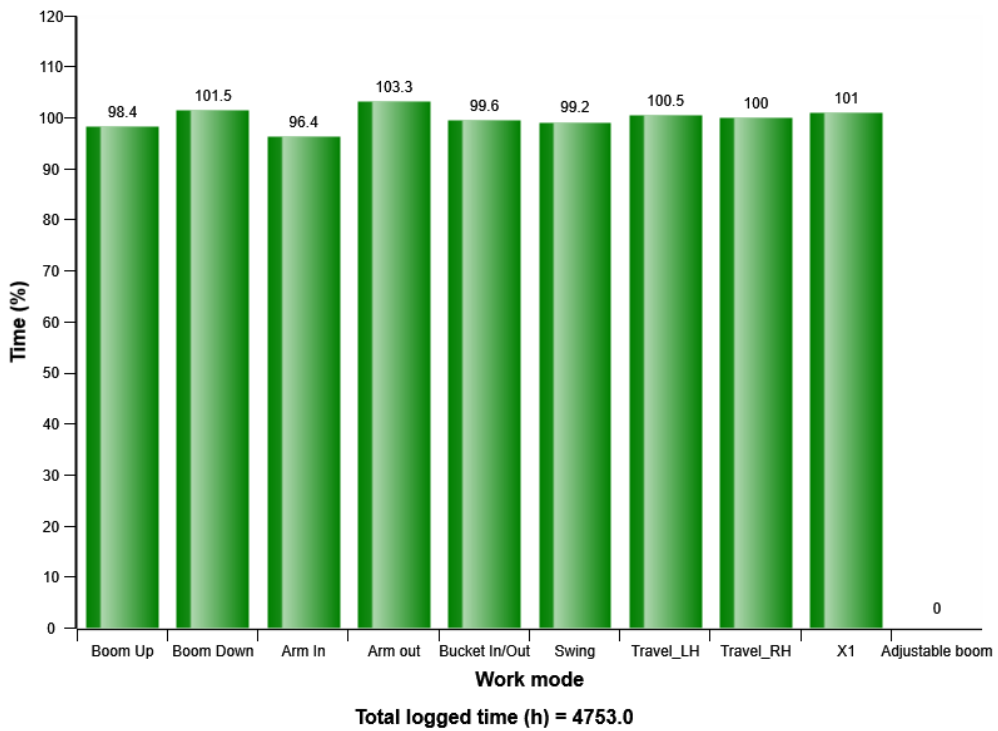


Machine model	SerialNo	Operating Hours	Reading Date
EC380E	310133	4752.8	11/30/2017

Pump torque load for 2 pump interaction distribution (%)

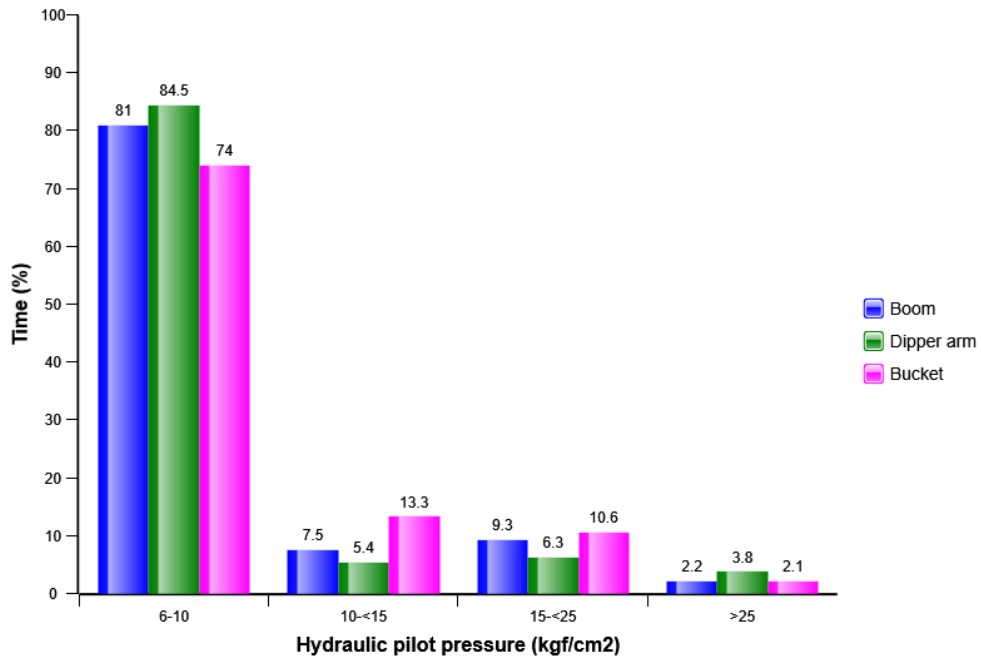


Hydraulic working mode distribution (%)

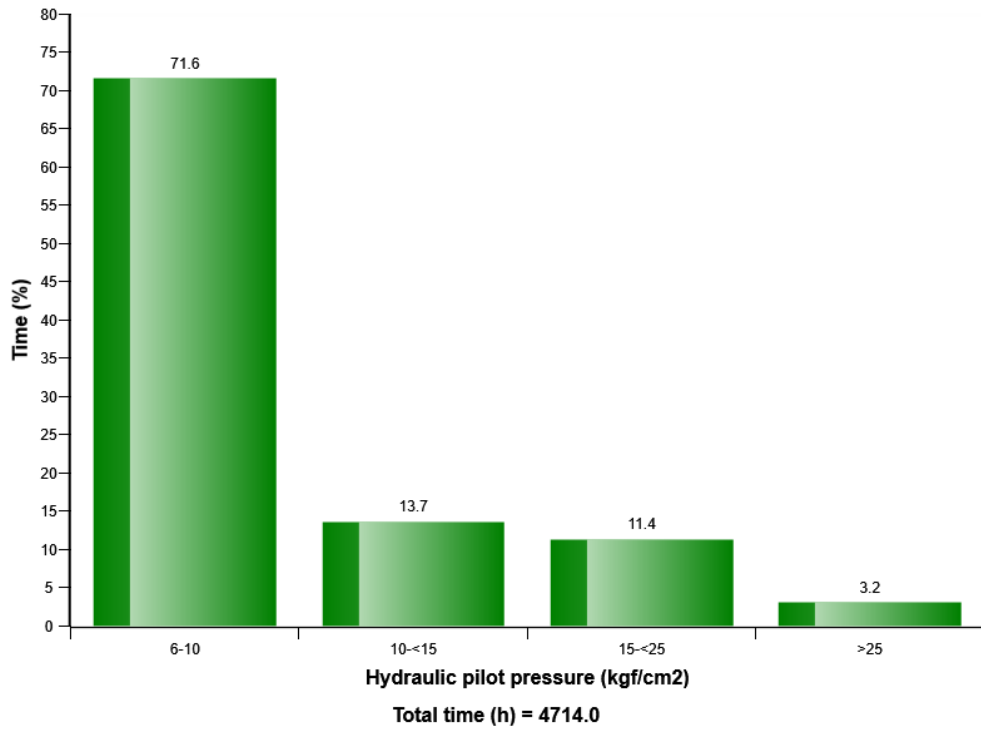


Machine model	SerialNo	Operating Hours	Reading Date
EC380E	310133	4752.8	11/30/2017

Hydraulic pilot pressure on bucket, boom and arm operation distribution (%)

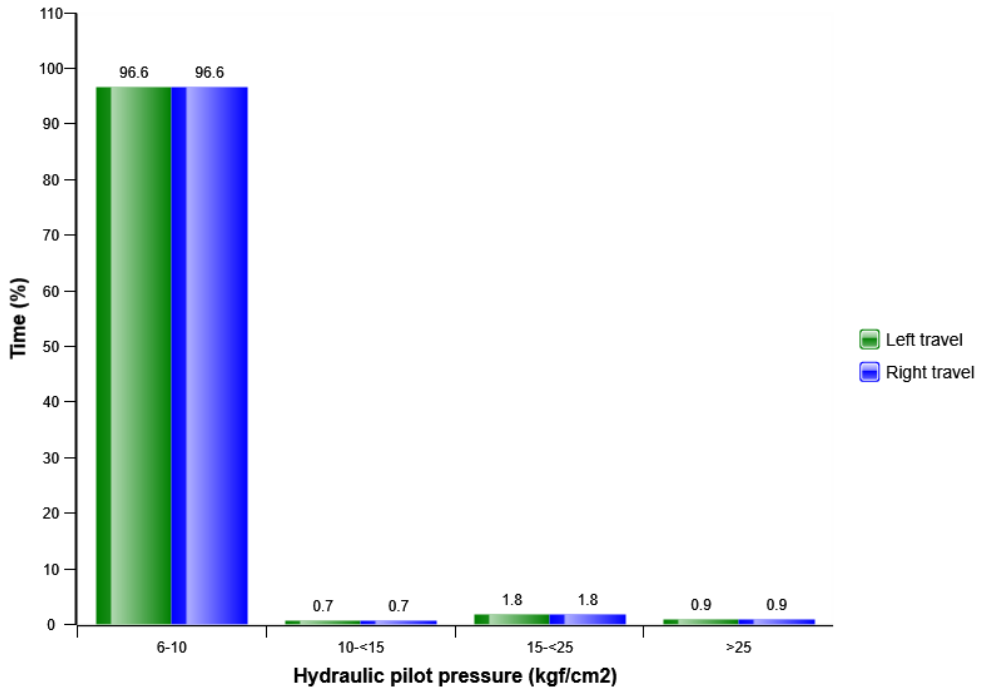


Hydraulic pilot pressure on swing operation distribution (%)

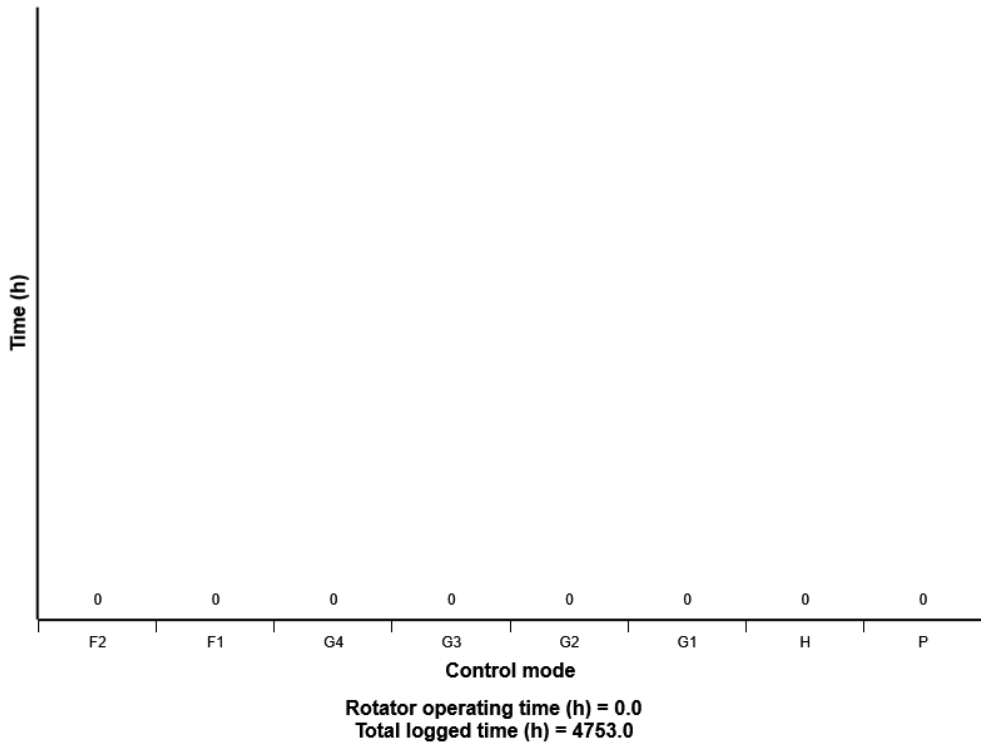


Machine model	SerialNo	Operating Hours	Reading Date
EC380E	310133	4752.8	11/30/2017

Hydraulic pilot pressure on travel operation distribution (%)



Rotator operation on engine speed mode distribution (h)



Machine model	SerialNo	Operating Hours	Reading Date
EC380E	310133	4752.8	11/30/2017

X1 hydraulic oil flow control distribution

